



Handbücher / Manuals

VIPA
Gesellschaft für Visualisierung
und Prozessautomatisierung mbH

Ohmstraße 4
D-91074 Herzogenaurach
Tel.: +49-9132-744-0
Fax: +49-9132-744-144
Internet: www.vipa.de
E-Mail: Info@vipa.de

Manual

VIPA Accessories Teleservice module TM-E 900-1E630

Order-No.: VIPA HB39E_TME
Reference: RE_900-1E630
Rev. 09/11

This manual is part of the documentation package
with order number VIPA HB39E_TME and relevant for:

Product	Order number	as of state:	
		HW	FW
TM-E ISDN	VIPA 900-1E630	01	5.6



The information contained in this manual is supplied without warranties. The information is subject to change without notice.

© Copyright 2009 VIPA, Gesellschaft für Visualisierung und Prozessautomatisierung mbH
Ohmstraße 4, D-91074 Herzogenaurach,
Tel.: +49 (91 32) 744 -0
Fax.: +49 (91 32) 744-1864
EMail: info@vipa.de
<http://www.vipa.de>

Hotline: +49 (91 32) 744-1150

All rights reserved

Disclaimer of liability

The contents of this manual were verified with respect to the hard- and software.

However, we assume no responsibility for any discrepancies or errors. The information in this manual is verified on a regular basis and any required corrections will be included in subsequent editions.

Suggestions for improvement are always welcome.

Trademarks

VIPA and System 300V

are registered trademarks of VIPA Gesellschaft für Visualisierung und Prozessautomatisierung mbH.

SPEED7

is a registered trademarks of profichip GmbH.

SIMATIC, STEP and S7-300

are registered trademarks of Siemens AG.

Any other trademarks referred to in the text are the trademarks of the respective owner and we acknowledge their registration.

About this manual

Important note!

The information in this manual should simplify you the deployment of remote controlling VIPA PLCs. More information concerning this may be found in German and English at:

support.ewon.biz
www.ewon-online.de

The TM-E module from VIPA is constructed in the same way as the module "eWON2001".

Overview**Chapter 1: Assembly and installation guidelines**

In this chapter you will find all information, required for assembly and installation of the TM-E module.

Chapter 2: Hardware description

Here the hardware components of the TM-E module are more described. The technical data are at the end of this chapter.

Chapter 3: Deployment

This chapter concerns on the deployment of the TM-E module from VIPA with a PLC. With the fast introduction you will get an overview about the possibilities of teleservice. Another part of this chapter is the configuration of the TM-E module by means of the integrated Web page.

This chapter ends with the possibilities of the teleservice functions.

Contents

User considerations	1
Safety information	2
Chapter 1 Assembly and installation guidelines	1-1
Safety information for Users.....	1-2
Installation dimensions.....	1-3
Assembly.....	1-4
Cabling.....	1-6
Installation guidelines.....	1-7
Chapter 2 Hardware description	2-1
Properties.....	2-2
Structure.....	2-3
Technical Data.....	2-7
Chapter 3 Deployment	3-1
Fast introduction.....	3-2
Assembly.....	3-5
Cabling.....	3-6
TM-E - Configuration - eBuddy.....	3-7
TM-E - Reset.....	3-13
TM-E - Web page.....	3-14
TM-E - PLC linking.....	3-16
TM-E - Project integration - PG/PC interface.....	3-19
Deployment of Tags.....	3-24
Teleservice via telephone with MPI gateway.....	3-27
Teleservice via telephone - Ethernet gateway.....	3-30
Teleservice via Callback function.....	3-33
Sending SMS via mail gateway.....	3-37
Appendix	A-1
Index.....	A-1

User considerations

Objective and contents This manual describes the Teleservice module TM-E ISDN from VIPA. It contains a description of the construction, project implementation and usage.

Target audience The manual is targeted at users who have a background in automation technology.

Structure of the manual The manual consists of chapters. Every chapter provides a self-contained description of a specific topic.

Guide to the document The following guides are available in the manual:

- an overall table of contents at the beginning of the manual
- an overview of the topics for every chapter
- an index at the end of the manual.

Availability The manual is available in:

- printed form, on paper
- in electronic form as PDF-file (Adobe Acrobat Reader)

Icons Headings Important passages in the text are highlighted by following icons and headings:



Danger!
Immediate or likely danger.
Personal injury is possible.



Attention!
Damages to property is likely if these warnings are not heeded.



Note!
Supplementary information and useful tips

Safety information

Applications conforming with specifications

The Teleservice module TM-E is constructed and produced for:

- communication and process control
- general control and automation applications
- industrial applications
- operation within the environmental conditions specified in the technical data
- installation into a cubicle



Danger!

This device is not certified for applications in

- in explosive environments (EX-zone)

Documentation

The manual must be available to all personnel in the

- project design department
- installation department
- commissioning
- operation



The following conditions must be met before using or commissioning the components described in this manual:

- Modification to the process control system should only be carried out when the system has been disconnected from power!
- Installation and modifications only by properly trained personnel
- The national rules and regulations of the respective country must be satisfied (installation, safety, EMC ...)

Disposal

National rules and regulations apply to the disposal of the unit!

Chapter 1 Assembly and installation guidelines

Overview In this chapter you will find all information, required for assembly and installation of the TM-E module.

Content	Topic	Page
	Chapter 1 Assembly and installation guidelines.....	1-1
	Safety information for Users.....	1-2
	Installation dimensions	1-3
	Assembly.....	1-4
	Cabling.....	1-6
	Installation guidelines	1-7

Safety information for Users

Handling of electrostatic sensitive modules

VIPA modules make use of highly integrated components in MOS-Technology. These components are extremely sensitive to over-voltages that can occur during electrostatic discharges.

The following symbol is attached to modules that can be destroyed by electrostatic discharges.



The Symbol is located on the module, the module rack or on packing material and it indicates the presence of electrostatic sensitive equipment.

It is possible that electrostatic sensitive equipment is destroyed by energies and voltages that are far less than the human threshold of perception. These voltages can occur where persons do not discharge themselves before handling electrostatic sensitive modules and they can damage components thereby, causing the module to become inoperable or unusable.

Modules that have been damaged by electrostatic discharges can fail after a temperature change, mechanical shock or changes in the electrical load.

Only the consequent implementation of protection devices and meticulous attention to the applicable rules and regulations for handling the respective equipment can prevent failures of electrostatic sensitive modules.

Shipping of electrostatic sensitive modules

Modules must be shipped in the original packing material.

Measurements and alterations on electrostatic sensitive modules

When you are conducting measurements on electrostatic sensitive modules you should take the following precautions:

- Floating instruments must be discharged before use.
- Instruments must be grounded.

Modifying electrostatic sensitive modules you should only use soldering irons with grounded tips.



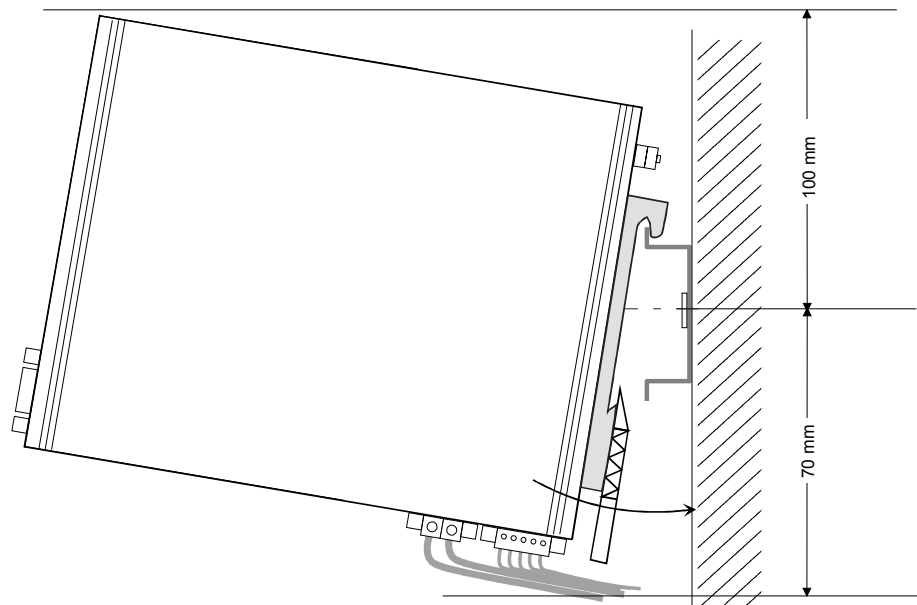
Attention!

Personnel and instruments should be grounded when working on electrostatic sensitive modules.

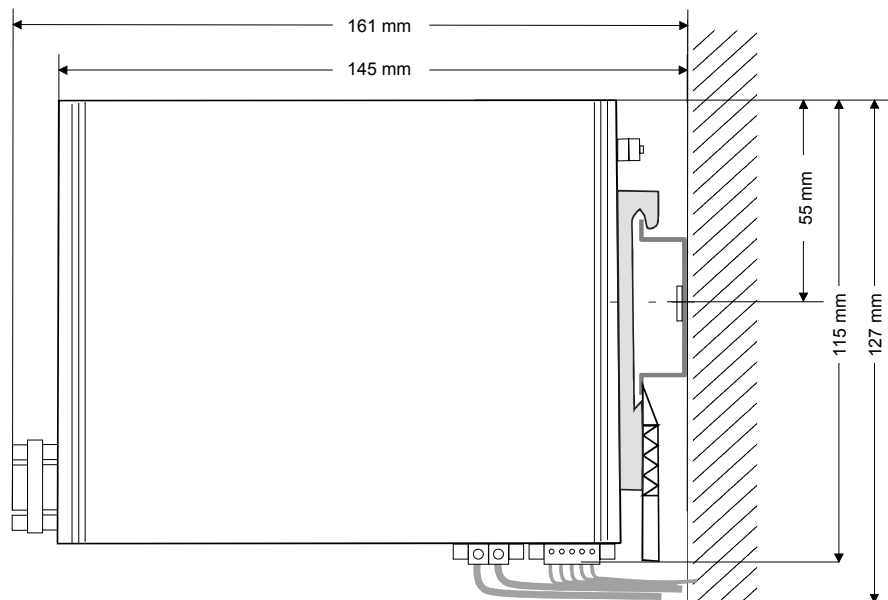
Installation dimensions

Dimensions

Make sure that a clearance of at least 100mm exists above and 70mm below the middle of the bus rail.



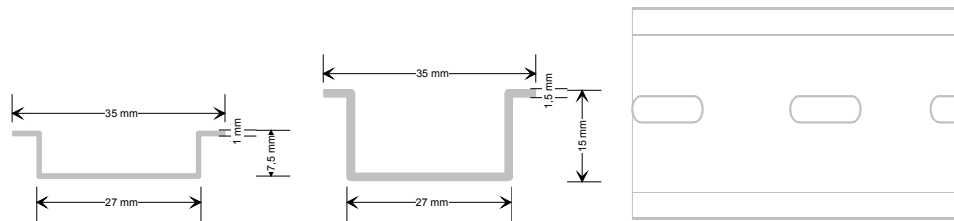
Dimensions assembled



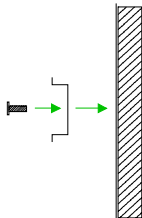
Assembly

General

The modules are installed on a profile rail. You may use the following standard 35mm profile rail:

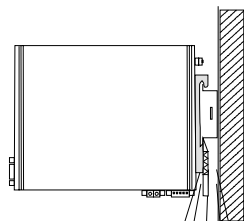
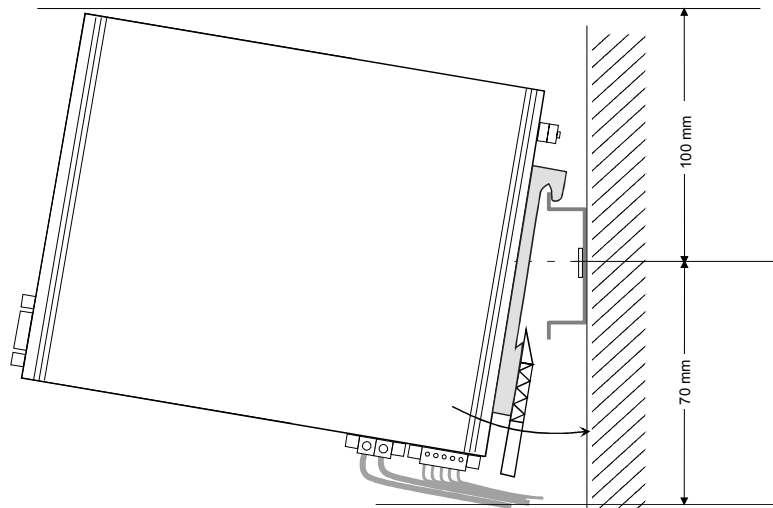
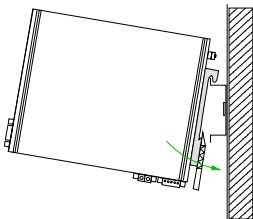
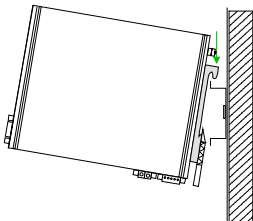


Assembly procedure



The following sequence represents the assembly procedure as viewed from the side.

- Install the profile rail. Make sure that a clearance of at least 100mm exists above and 70mm below the middle of the profile rail.

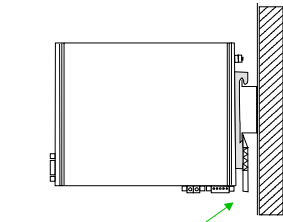


Click

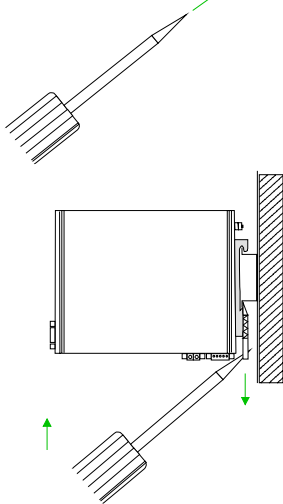
- Insert the module that you are installing into the profile rail at an angle of about 45 degrees from the top and rotate the module into place until it clicks into the profile rail with an audible click.

Removal procedure

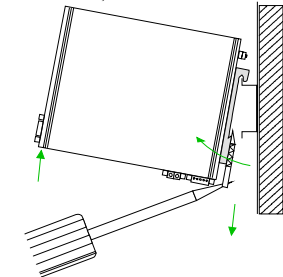
The following sequence shows the steps required for the removal of modules in a side view.



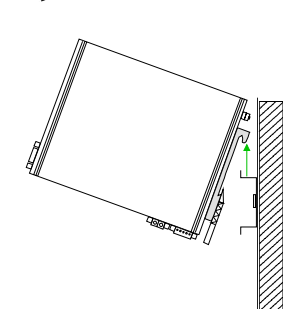
- The enclosure of the module has a spring-loaded clip at the bottom by which the module can be removed from the rail.
- Insert a screwdriver into the slot as shown.



- The clip is unlocked by pressing the screwdriver in an upward direction.



- Withdraw the module with a slight rotation to the top.

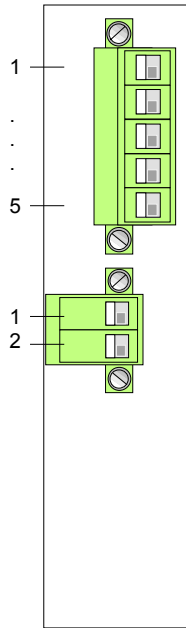


Cabling

Overview

At the lower side of the TM-E module there are connectors for power supply and digital inputs/outputs. The output is designed as low-side output and may be configured.

The connectors are plugs with screw contacts. If connected the plugs may be fixed with screws.

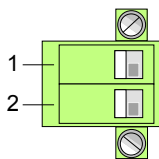


Pin	Name	Meaning
Digital input/output		
1	DO_GND	DO ground
2	DO_OC	Digital output DC 24V, 0.2A Low-side output
3	DO_VDC	DO load voltage DC 24V
4	DI_GND	DI ground (isolated)
5	DI	Digital input DC 0/24V "0": 0 ... 5V DC "1": 10V ... 30V DC

Power supply		
1	GND	Ground power supply
2	12-24V DC	DC 12 ... 24V ±20%

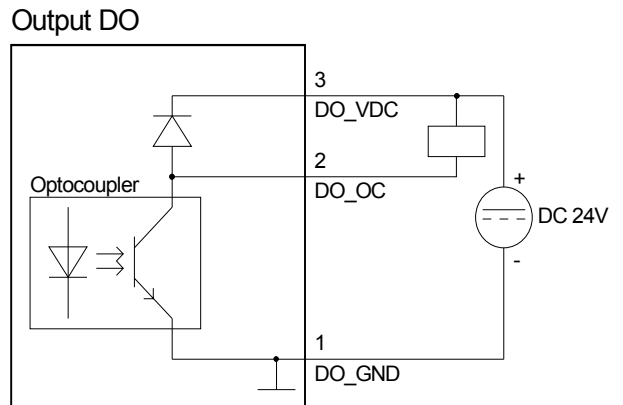
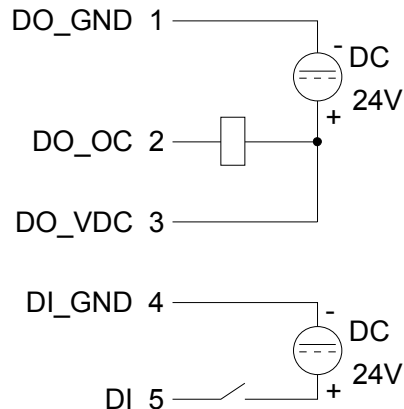
Power supply

The TM-E module is to be supplied by DC 12...24V ±20%. The connection is established by means of a plug. This is at the lower side of the module and has the following allocation:



Pin	Name	Meaning
1	GND	Ground power supply
2	12-24V DC	DC 12 ... 24V ±20%

DI/DO wiring / schematic diagram



Installation guidelines

General The installation guidelines contain information about the possible interference causes. Here we describe possible ways of interference that may disturb the controlling system and how you have to approach shielding and screening issues to ensure the electromagnetic compatibility (EMC).

What is EMC? The term "electromagnetic compatibility" (EMC) refers to the ability of an electrical device to operate properly in an electromagnetic environment without interference from the environment or without the device causing illegal interference to the environment.

The TM-E is developed for applications in harsh industrial environments and they comply with EMC requirements to a large degree. In spite of this you should implement an EMC strategy before installing your SPS and the TM-E module, which should include any possible source of interference.

Possible interference causes Electromagnetic interferences may interfere your control via different ways:

- Fields
- I/O signal conductors
- Bus system
- Current supply
- Protected earth conductor

Depending on the spreading medium (lead bound or lead free) and the distance to the interference cause, interferences to your control occur by means of different coupling mechanisms.

One differs:

- galvanic coupling
- capacitive coupling
- inductive coupling
- radiant coupling

Basic rules for EMC

In the most times it is enough to take care of some elementary rules to guarantee the EMC. Please regard the following basic rules when installing your PLC.

- Take care of a correct area-wide grounding of the inactive metal parts when installing your components.
 - Install a central connection between the ground and the protected earth conductor system.
 - Connect all inactive metal extensive and impedance-low.
 - Please try not to use aluminum parts. Aluminum is easily oxidizing and is therefore less suitable for grounding.
- When cabling, take care of the correct line routing.
 - Organize your cabling in line groups (high voltage, current supply, signal and data lines).
 - Always lay your high voltage lines and signal res. data lines in separate channels or bundles.
 - Route the signal and data lines as near as possible beside ground areas (e.g. suspension bars, metal rails, tin cabinet).
- Proof the correct fixing of the lead isolation.
 - Data lines must be laid isolated.
 - Analog lines must be laid isolated. When transmitting signals with small amplitudes the one sided laying of the isolation may be favorable.
 - Lay the line isolation extensively on an isolation/protected earth conductor rail directly after the cabinet entry and fix the isolation with cable clamps.
 - Make sure that the isolation/protected earth conductor rail is connected impedance-low with the cabinet.
 - Use metallic or metalized plug cases for isolated data lines.
- In special use cases you should appoint special EMC actions.
 - Wire all inductivities with erase links, which are addressed by your PLC.
 - For lightening cabinets you should prefer incandescent lamps and avoid luminescent lamps.
- Create a homogeneous reference potential and ground all electrical operating supplies when possible.
 - Please take care for the targeted employment of the grounding actions. The grounding of the PLC is a protection and functionality activity.
 - Connect installation parts and cabinets with your PLC in star topology with the isolation/protected earth conductor system. So you avoid ground loops.
 - If potential differences between installation parts and cabinets occur, lay sufficiently dimensioned potential compensation lines.

Isolation of conductors

Electrical, magnetically and electromagnetic interference fields are weakened by means of an isolation, one talks of absorption.

Via the isolation rail, that is connected conductive with the rack, interference currents are shunt via cable isolation to the ground. Hereby you have to make sure, that the connection to the protected earth conductor is impedance-low, because otherwise the interference currents may appear as interference cause.

When isolating cables you have to regard the following:

- If possible, use only cables with isolation tangle.
- The hiding power of the isolation should be higher than 80%.
- Normally you should always lay the isolation of cables on both sides. Only by means of the both-sided connection of the isolation you achieve high quality interference suppression in the higher frequency area.
Only as exception you may also lay the isolation one-sided. Then you only achieve the absorption of the lower frequencies. A one-sided isolation connection may be convenient, if:
 - the conduction of a potential compensating line is not possible
 - analog signals (some mV res. μ A) are transferred
 - foil isolations (static isolations) are used.
- With data lines always use metallic or metalized plugs for serial couplings. Fix the isolation of the data line at the plug rack. Do not lay the isolation on the PIN 1 of the plug bar!
- At stationary operation it is convenient to strip the insulated cable interruption free and lay it on the isolation/protected earth conductor line.
- To fix the isolation tangles use cable clamps out of metal. The clamps must clasp the isolation extensively and have well contact.
- Lay the isolation on an isolation rail directly after the entry of the cable in the cabinet. Lead the isolation further on to the PLC and **don't** lay it on there again!

**Please regard at installation!**

At potential differences between the grounding points, there may be a compensation current via the isolation connected at both sides.

Remedy: Potential compensation line

Chapter 2 Hardware description

Overview Here the hardware components of the TM-E module are more described. The technical data are at the end of this chapter.

Content	Topic	Page
	Chapter 2 Hardware description	2-1
	Properties.....	2-2
	Structure	2-3
	Technical Data	2-7

Properties

Overview

The TM-E is an intelligent teleservice module. This module makes simple and safe communication with your machines and plants possible via telephone respectively Internet. Values of your plant may be observed and appropriate reactions to limit exceeds may be configured. Here e.g. plant data may be collected and sent via mail.

Due to the integrated Web page, for configuration there is no additional software necessary.

Due to the predefined server the embedding to a VIPA PLC may be established problem-free. The TM-E module may be integrated as PG/OP interface to the Siemens SIMATIC manager by means of a station file.

Properties

- Transparent Ethernet gateway with TCP/IP Router
- Sending alarms by eMail and SMS (only via free SMS provider)
- up to 20 Ethernet sessions simultaneous
- Programmable gateway by BASIC
- fully customizable Web pages (in HTML)
- integrated alarm management
- RS485 MPI interface
- RJ45 Ethernet interface
- RJ11 Euro ISDN modem

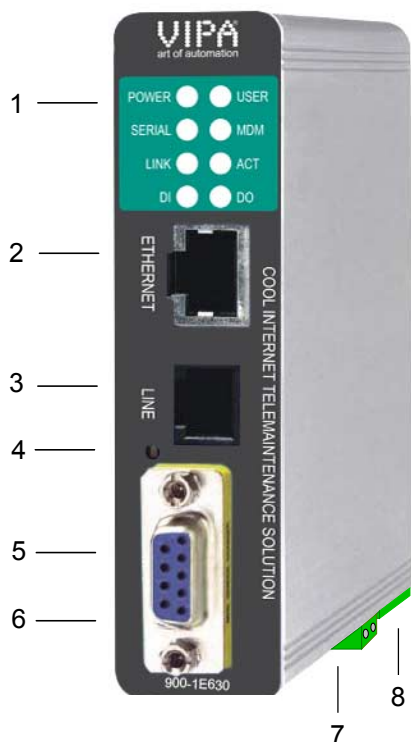


Order data

Type	Order number	Description
TM-E ISDN	VIPA 900-1E630	DC 12 ... 24V, ISDN, MPI, Ethernet RJ45, router functions, DI 1xDC 24V, DO 1xDC 24V 0.2A

Structure

TM-E ISDN

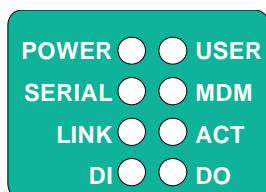


- [1] LEDs
- [2] RJ45 Ethernet interface
- [3] RJ11 ISDN modem
- [4] Reset button
- [5] RS485 MPI interface
- [6] DIP switch MPI interface
- [7] Connector for DC 12...24V power supply
- [8] Connector for digital I/O

Components

LEDs

At the front-side of the TM-E module there are two rows of LEDs. The following table shows you the usage of the LEDs and the according colors:



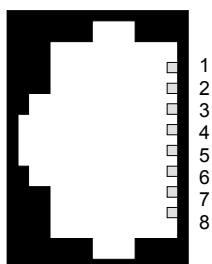
Label	Color	Meaning
POWER	green	Power supply is active.
USER	green	blinks: The TM-E module is ready for communication (ca. 20s after PowerOn)
	red	blinks: IP address not valid (just exist)
	red/green	blinks alternating: The TM-E module is just waiting for an IP address during boot-up. The LED is also used with the Reset. More about this may be found at "TM-E - Reset".
Serial	green	blinks: The TM-E module is communicating with the PLC via MPI.
MDM	green	on: The modem of the TM-E module is physically connected.
LINK	green	on: The TM-E module is physically connected to Ethernet.
ACT	green	blinks: The TM-E module communicates via Ethernet (activity).
DI	green	on: The digital input of the TM-E module is "1".
DO	green	on: The digital output of the TM-E module is "1".

RJ45 Ethernet interface

You may connect your TM-E module to Ethernet by the RJ45 interface. Via Ethernet the integrated Web page of the TM-E module may be accessed for according configurations. The interface is automatically adapting to the transfer rate 10 or 100Mbit/s

The jack has the following assignment:

8-pole RJ45 jack:



Pin	Assignment
1	Transmit +
2	Transmit -
3	Receive +
4	-
5	-
6	Receive -
7	-
8	-

Linking to Ethernet

Connect your PC to your TM-E module via Ethernet. Here either a crossed cable or a switch may be used.

An active link via Ethernet is shown by the TM-E module with the green "LINK" led.

The TM-E module is delivered with the following IP address parameters:

IP address: 10.0.0.53
Subnet mask: 255.255.255.0

To change the IP address parameters the configuration tool "eBuddy" from VIPA may be used.

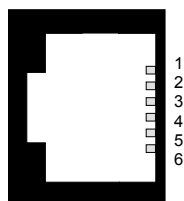
RJ11 interface ISDN modem

There is an ISDN modem integrated to the TM-E module. The connection to your ISDN telephone line happens by the RJ11 interface.

Here you may use the ISDN cable, which is in the scope of delivery.

The "Line" interface has the following assignment:

6-pole RJ11 jack:

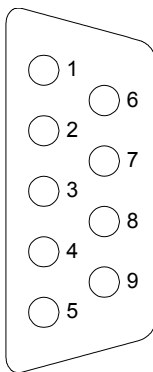


Pin	Assignment
1	-
2	TX+
3	RX+
4	RX-
5	TX-
6	-

MPI interface

The TM-E module is connected to your PLC CPU via the MPI interface. The interface is designed as RS485 plug. There is a gender changer in the scope of delivery. This converts the RS485 plug 1:1 to a RS485 jack. To connect a plug designed as jack you may remove the gender changer. The MPI interface has the following assignment:

9-pole SubD:



Pin	Assignment
1	n.c.
2	n.c.
3	RxD/TxD (line B)
4	n.c.
5	GND
6	n.c.
7	n.c.
8	RxD/TxD (line A)
9	n.c.

DIP switch for MPI

The serial line is to be terminated with its ripple resistor. Please make sure to terminate the last participants on the bus at both ends by activating the terminating resistor of 120Ω.

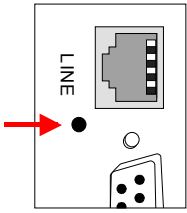
If there is no data activity, the bus gets external disturbances. To avoid this a *line polarization* may be activated. Here the lines are held on a constant level by connecting a pair of resistors of 680Ω.

At the left-side of the TM-E module there is a DIP switch. Here *line polarization* and *termination* may be activated or deactivated.

The following switch positions are possible:

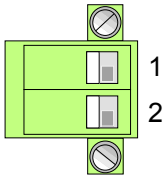
Position	Polarization	Termination
4 3 2 1 	off	off
4 3 2 1 	on	on

Reset



A reset at the TM-E module may be initiated by the Reset button. The Reset button is allocated below the "Line" jack behind an opening. Please use for operation a pointed object. More about the deployment of the Reset button may be found at "TM-E - Reset".

Connector power supply

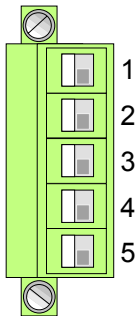


The TM-E module is to be power supplied by DC 12 ... 24V ±20%. Here the power consumption amounts to 3 ... 6W.

For power supply there is a 2-pin connector at the lower-side of the TM-E module. The connector is a plug with screw contacts. If connected the plugs may be fixed with screws. The connector has the following assignment:

Pin	Name	Meaning
1	GND	Ground power supply
2	12-24V DC	DC 12 ... 24V ±20%

Connector digital I/O

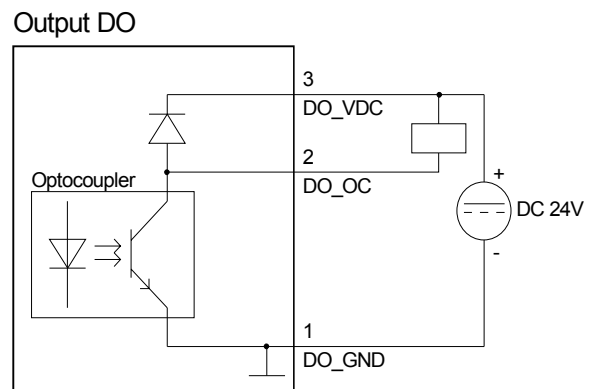
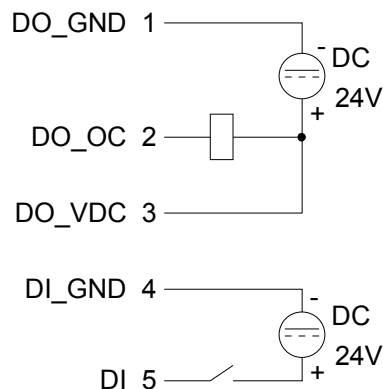


For the digital inputs/outputs there is a 5-pin connector at the low-side of the TM-E module. The output is designed as low-side output and may accordingly be configured.

The connector is a plug with screw contacts. If connected the plugs may be fixed with screws.

Pin	Name	Meaning
Digital input/output		
1	DO_GND	DO ground
2	DO_OC	Digital output DC 24V, 0.2A Low-side output
3	DO_VDC	DO load voltage DC 24V
4	DI_GND	DI ground (isolated)
5	DI	Digital input DC 0/24V "0": 0 ... 5V "1": 10 ... 30V

Wiring diagram / Schematic diagram



Technical Data

TM-E ISDN

Electrical data	VIPA 900-1E630
Power supply (rated value)	DC 12 ... 24V \pm 20%
Power consumption	3 ... 6W
Nominal current	max. 300mA
Mark of conformity and certification	CE
Hardware	
Memory	8Mbyte SDRAM, 8Mbyte Flash
Integrated real time clock	Manual setting by Web interface or automatically by NTP Server, without battery
Environment conditions	
Position of installation	horizontal/vertical
Operating temperature	0 ... +50°C
Relative humidity	80% (no condensation)
Storage /Transport temperature	-20 ... +60°C
Interfaces	
Ethernet Isolation tested with	RJ45 Ethernet 10/100 BaseTX; 1.5kV
MPI	RS485 isolated
Line	RJ11 for ISDN
Integrated Euro ISDN modem	
ISDN specification	ISDN BRI SO.1.430
Type	1B+D
Max. Baud rate	64kbyte
Integrated ISDN Cable	ca. 3m
Digital I/Os	
Input	1xDI 0/24V DC
Output (Low side) Isolation tested with	1xDO DC 24V, 0.2A 3.5kV
Data record	
Protocols	Modbus RS485, Modbus TCP, Unitelway, DF1, PPI MPI (on board) and serial ASCII
Dimensions and weight	
Dimension front (WxHxD)	26 x 105 x 120mm
Weight	350g

Chapter 3 Deployment

Overview

This chapter concerns on the deployment of the TM-E module from VIPA with a PLC. With the fast introduction you will get an overview about the possibilities of teleservice. Another part of this chapter is the configuration of the TM-E module by means of the integrated Web page.

This chapter ends with the possibilities of the teleservice functions.

Content

Topic	Page
Chapter 3 Deployment	3-1
Fast introduction.....	3-2
Assembly.....	3-5
Cabling.....	3-6
TM-E - Configuration - eBuddy.....	3-7
TM-E - Reset.....	3-13
TM-E - Web page.....	3-14
TM-E - PLC linking.....	3-16
TM-E - Project integration - PG/PC interface.....	3-19
Deployment of Tags.....	3-24
Teleservice via telephone with MPI gateway.....	3-27
Teleservice via telephone - Ethernet gateway.....	3-30
Teleservice via Callback function.....	3-33
Sending SMS via mail gateway.....	3-37

Fast introduction

Important note!

The information in this manual should simplify you the deployment of remote controlling VIPA PLCs. More information concerning this may be found in German and English at:

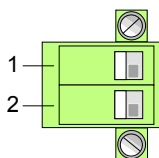
support.ewon.biz

www.ewon-online.de

The module TM-E from VIPA is constructed in the same way as the module "eWON2001".

Power supply

The TM-E module is to be supplied with DC 12...24V ±20%. The connection is established by a plug. This may be found at the lower side of the module and has the following allocation:



Pin	Name	Meaning
1	GND	Ground power supply
2	12-24V DC	DC 12 ... 24V ±20%

IP address parameters on delivery

For the access to the TM-E-Modul valid IP address parameters are necessary. The IP addresses are assigned by the network administrator and must be coordinated with him.

The TM-E module is delivered with the following IP address parameters:

IP address: 10.0.0.53
Subnet mask: 255.255.255.0

To change the IP address parameters the configuration tool "eBuddy" from VIPA may be used.



Caution!

For every TM-E module is delivered with the IP address 10.0.0.53 you must not connect more than one new TM-E module at one time.

First commissioning: Connect the new TM-E module with the network, assign TCP/IP address parameters. Now you may connect the next new TM-E module and so on ...

Linking to Ethernet

Connect your PC to your TM-E module via Ethernet. Here either a crossed cable or a switch may be used.

An active link via Ethernet is shown by the TM-E module with the green "LINK" led.

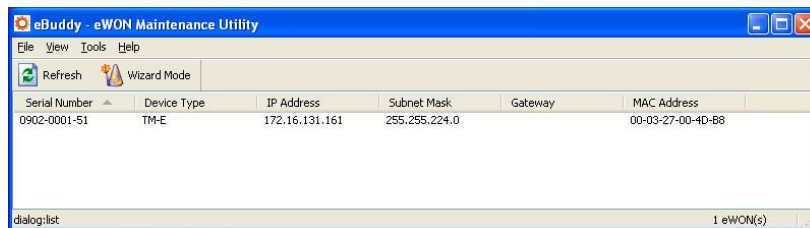
Access via eBuddy

The software tool "eBuddy" may be found at the download area of www.vipa.de. For installation execute eBuddySetup.exe and follow the instructions.

- Start eBuddy.



- Switch to the list view with "Switch to list mode". Here every TM-E module available in you network is listed.



By selecting the corresponding TM-E module at the list, the following functions are available by the context menu (right click):

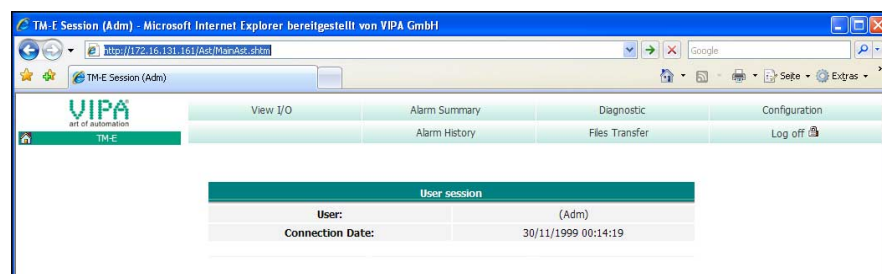
- Changing respectively entering the IP address parameters
- Loading respectively executing a firmware update
- Backup respectively restoring of an application
- Access to the integrated web page of the TM-E module

Access to the Web page

Open the Web page of the corresponding TM-E module. After entering *User name* and *Password* the web page of the corresponding TM-E module is opened.

Access parameters

User name: adm
 Password: adm



Access to the VIPA PLC

- Connect your CPU to the TM-E module via MPI.
 - Switch on the power supply of the CPU and switch the CPU to RUN.
 - Open the Web page of the corresponding TM-E module.
 - Open with **Configuration** > *I/O server config*. the page for adjusting an I/O server. Set as I/O server "S73&400".
 - To access the VIPA PLC enter the following parameters:

<i>MPI destination node:</i>	2 (standard)
<i>Baud rate:</i>	187500
<i>Reply timeout:</i>	3000 (Standard)
<i>MPI address:</i>	0 (Standard)
<i>Highest MPI station address:</i>	31 (Standard)
<i>Topic A:</i>	enabled
<i>Global device address:</i>	MPI, # (with #: MPI address CPU)
<i>Poll rate:</i>	2000 MS (Standard)
 - To confirm click at [Update config].
- Now the CPU may be accessed via the TM-E module.

Establish a Tag

In a *Tag* the storage areas of you PLC may be defined. These storage areas may R/W accessed by the Tag.

- To establish a Tag open at the Web page the page "Tag setup" and click at "Create new Tag ...".
- Enter the following parameters:

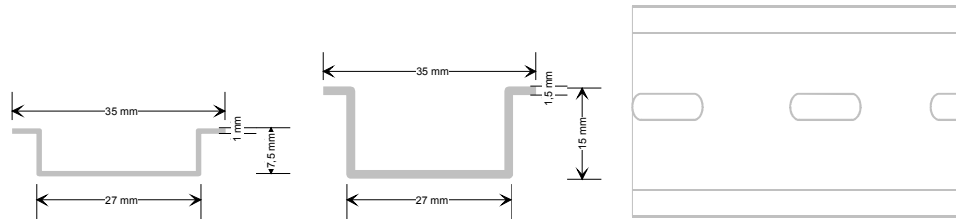
<i>Tag name:</i>	Test
<i>Server name:</i>	S73&400
<i>Topic name:</i>	A
<i>Address:</i>	MW0
<i>Type:</i>	Boolean
- Otherwise leave the standard setting and click at [Add/Update...].
- Switch with **Main menu** > *View I/O* to the Tag list.
- Enter a new value for the Tag "Test" and click at [Update]. Now this value is set and may be transferred to the CPU with clicking to [Update] in the head line.
- If the new value is accepted by the CPU, so the communication between the TM-E module and the CPU is secured.

These steps are more described at the following pages.

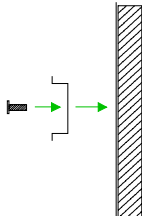
Assembly

General

The modules are installed on a profile rail. You may use the following standard 35mm profile rail:

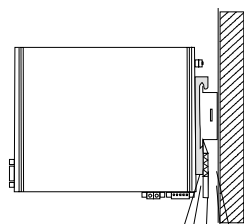
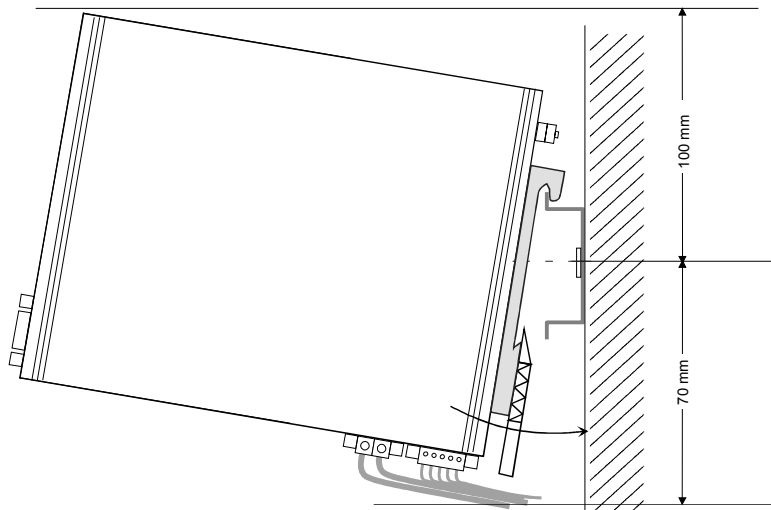
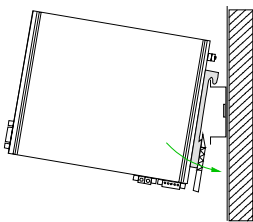
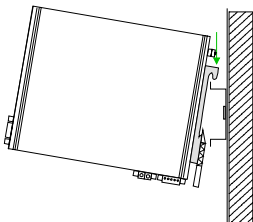


Assembly procedure



The following sequence represents the assembly procedure as viewed from the side.

- Install the profile rail. Make sure that a clearance of at least 100mm exists above and 70mm below the middle of the profile rail.



Clack

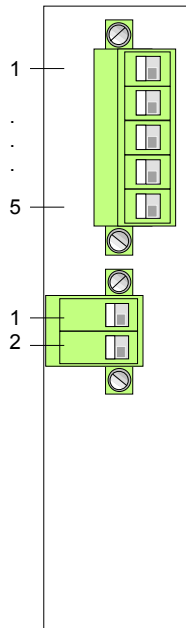
- Insert the module that you are installing into the profile rail at an angle of about 45 degrees from the top and rotate the module into place until it clicks into the profile rail with an audible click.

Cabling

Overview

At the lower side of the TM-E module there are connectors for power supply and digital inputs/outputs. The output is designed as low-side output and may be configured.

The connectors are plugs with screw contacts. If connected the plugs may be fixed with screws.

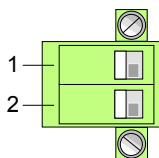


Pin	Name	Meaning
Digital input/output		
1	DO_GND	DO ground
2	DO_OC	Digital output DC 24V, 0.2A Low-side output
3	DO_VDC	DO load voltage DC 24V
4	DI_GND	DI ground (isolated)
5	DI	Digital input DC 0/24V "0": 0 ... 5V DC "1": 10V ... 30V DC

Power supply		
1	GND	Ground power supply
2	12-24V DC	DC 12 ... 24V ±20%

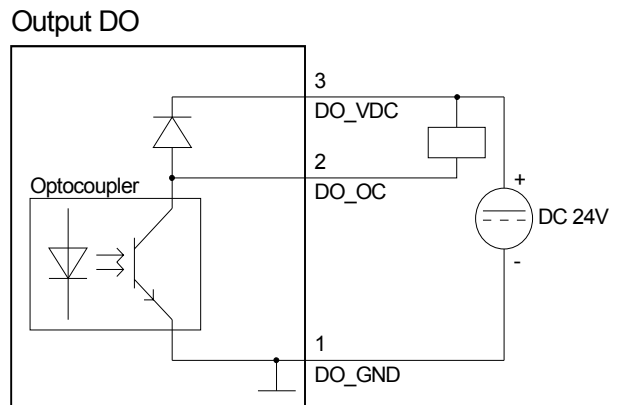
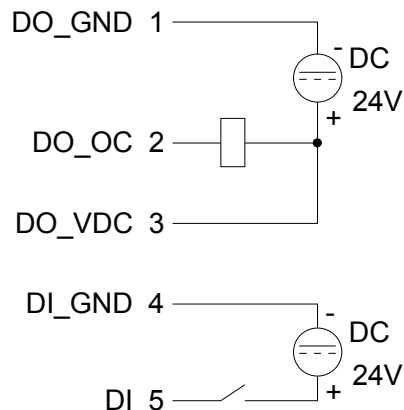
Power supply

The TM-E module is to be supplied by DC 12...24V ±20%. The connection is established by means of a plug. This is at the lower side of the module and has the following allocation:



Pin	Name	Meaning
1	GND	Ground power supply
2	12-24V DC	DC 12 ... 24V ±20%

DI/DO wiring / schematic diagram



TM-E - Configuration - eBuddy

Overview

To deploy the TM-E module, the VIPA software tool "eBuddy" is necessary. With this new IP address parameters may be assigned to the TM-E module; you may load and transfer new firmware, backup/restore applications and access the integrated web page of the TM-E module.

Installation

The software tool "eBuddy" may be found at the download area of www.vipa.de. For installation execute eBuddySetup.exe and follow the instructions.

Wizard mode List mode

Connect the TM-E module via Ethernet and switch on its power supply. Start eBuddy. This always starts in the last used mode.



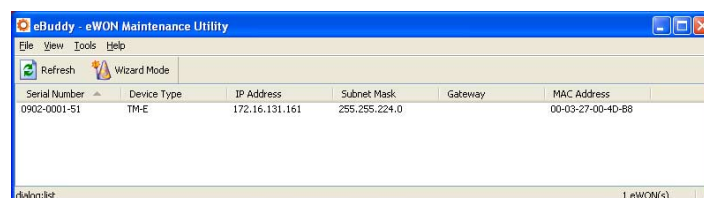
Wizard mode

Here the following functions are available:

- Set or modify the IP address parameters
- Load or execute a firmware update
- Backup or restore of an application

List mode

To change to the *List mode* from the *Wizard Mode* click to the link "Switch to list mode". In the *List mode* every TM-E module available in you network is listed.



By selecting the corresponding TM-E module in the list, there are the same functions available by context menu (right click), which were listed above.

Additionally the Web page integrated to the TM-E module may directly be accessed by "Open in browser"

Basics - IP address and subnet

Industrial Ethernet exclusively supports IPv4. At IPv4 the IP address is a 32Bit address that must be unique within the network and consists of 4 numbers that are separated by a dot.

Every IP address is a combination of a **Net-ID** and a **Host-ID** and its structure is as follows: **XXX.XXX.XXX.XXX**

Range: 000.000.000.000 to 255.255.255.255

The network administrator also defines IP addresses.

**Net-ID
Host-ID**

The **Network-ID** identifies a network res. a network controller that administrates the network.

The Host-ID marks the network connections of a participant (host) to this network.

Subnet mask

The Host-ID can be further divided into a **Subnet-ID** and a *new Host-ID* by using a bit for bit AND assignment with the **Subnet mask**.

The area of the original Host-ID that is overwritten by 1 of the Subnet mask becomes the Subnet-ID, the rest is the new Host-ID.

Subnet mask	binary all "1"		binary all "0"
IPv4 address	Net-ID	Host-ID	
Subnet mask and IPv4 address	Net-ID	Subnet-ID	<i>new Host-ID</i>

Subnet

A TCP-based communication via point-to-point, hub or switch connection is only possible between stations with identical Network-ID and Subnet-ID! Different area must be connected with a router.

The subnet mask allows you to sort the resources following your needs. This means e.g. that every department gets an own subnet and thus does not interfere another department.

Address at first start-up

At the first start-up the TM-E module has the following IP address:

IP address: 10.0.0.53
Subnet mask: 255.255.255.0



Attention!

For every TM-E module is delivered with the IP address 10.0.0.53 you must not connect more than one new TM-E module at one time.

First commissioning: Connect the new TM-E module with the network, assign TCP/IP address parameters. Now you may connect the next new TM-E module and so on ...

Address classes

For IPv4 addresses there are five address formats (class A to class E) that are all of a length of 4byte = 32bit.

Class A	0	Network-ID (1+7bit)	Host-ID (24bit)
Class B	10	Network-ID (2+14bit)	Host-ID (16bit)
Class C	110	Network-ID (3+21bit)	Host-ID (8bit)
Class D	1110	Multicast group	
Class E	11110	Reserved	

The classes A, B and C are used for individual addresses, class D for multicast addresses and class E is reserved for special purposes.

The address formats of the 3 classes A, B, C are only differing in the length of Network-ID and Host-ID.

Private IP networks

To build up private IP-Networks within the Internet, RFC1597/1918 reserves the following address areas:

Network class	Start IP	End IP	Standard subnet mask
A	10. <u>0.0.0</u>	10. <u>255.255.255</u>	255.0.0.0
B	172.16. <u>0.0</u>	172.31. <u>255.255</u>	255.255.0.0
C	192.168.0. <u>0</u>	192.168.255. <u>255</u>	255.255.255.0

(The Host-ID is underlined.)

These addresses can be used as net-ID by several organizations without causing conflicts, for these IP addresses are neither assigned in the Internet nor are routed in the Internet.

Reserved Host-Ids

Some Host-IDs are reserved for special purposes.

Host-ID = 0	Identifier of this network, reserved!
Host-ID = maximum (binary complete 1)	Broadcast address of this network

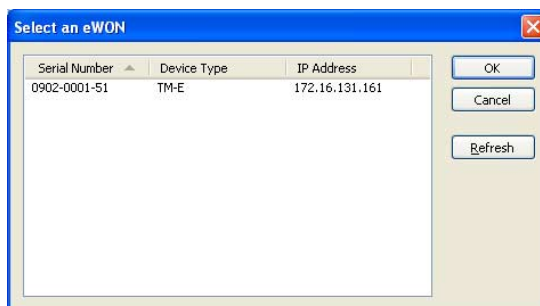
**Note!**

Never choose an IP address with Host-ID=0 or Host-ID=maximum!

(e.g. for class B with subnet mask = 255.255.0.0, the "172.16.0.0" is reserved and the "172.16.255.255" is occupied as local broadcast address for this network.)

Changing the IP address

For the access to the TM-E-Modul valid IP address parameters are necessary. The IP addresses are assigned by the network administrator. Per default the TM-E module is delivered with the IP address 10.0.0.53. You may switch to the IP address parameter wizard with "Set IP address". By clicking to [Browse...] each TM-E module of the network is listed.



- Choose the TM-E module, which corresponds to the serial number. Confirm your input and click to [Continue >].
- The dialog window to enter IP address data is opened.
- Enter the new IP address parameters. By clicking to [Continue >] the new IP address parameters are transferred to the TM-E module. → The TM-E module is started new. After a certain waiting period and during successful transmissions this is reported.
- [Finish >] closes the dialog.

Symbolic name instead of IP address

With each new dial-in of the TM-E module, this is assigned automatically with a new IP address. This is called dynamic address allocation.

Usually the TM-E module sends an eMail containing the current valid IP address. By this IP address the TM-E module may be accessed.

With the service of a DNS service provider like e.g. www.no-ip.com there is the possibility to directly access the TM-E module by a name instead by the IP address.

Here usually a free user account is to be established.

The corresponding DNS service provider may be selected on the Web page of the TM-E module at "Networking config" with the page "Publish IP address". Here the user data may be entered.

During communication the dynamic IP address is submitted to the service provider and there transformed to the symbolic name.

Update firmware

A firmware update happens in 2 steps:

- Update eBuddy
- Update firmware

Update eBuddy

With "Update eBuddy" the firmware files may directly be stored at you PC. This is necessary to update the firmware of you TM-E module.

As source the Internet or a local directory may be selected. With [Continue >] the available firmware language versions are listed. Select the corresponding version and download it with [Continue >] to your PC.

Update firmware

With "Update firmware" a dialog window is opened to request the login data. By selecting the corresponding TM-E module and by entering the login data, the firmware versions at your PC and at the TM-E module are listed.

Choose the concerning firmware version at your PC. The update procedure is started by [Continue >].

**Attention!**

When installing a new firmware you have to be extremely careful. Under certain circumstances you may destroy the TM-E module, for example if the voltage supply is interrupted during transfer or if the firmware file is defective.

In this case, please call the VIPA-Hotline!

The proceeding of the update is shown as a proceeding bar. Wait here until the bar is at 100%.

A successful update is reported by a status report.

Backup / restore application

With this function the configuration of a TM-E module may be stored and uploaded to the TM-E module.

Each modification on the configuration of the TM-E module should be stored.



Backup

Open the dialog window with clicking to "Backup/restore application". Select "Backup". Even if you want to forward the backup to the VIPA support the files relevant to the support should also be saved. Here activate the option "Include support files". Click to [Continue >].

Select the corresponding TM-E module, enter your login data and click to [Continue >]. Navigate to the concerning directory and enter a file name.

With [Continue >] the backup is stored with the file name in the concerning directory.

The proceeding of the write procedure is shown as a proceeding bar. Wait here until the bar is at 100%.

As soon as the backup is finished, you get a feedback.

Restore

Open the dialog window with clicking to "Backup/restore application". Select "Restore" and click to [Continue >].

Select the corresponding TM-E module, enter your login data and click to [Continue >]. Navigate to the concerning directory and enter a file name of the backup.

With [Continue >] the data are transferred to the TM-E module.

The proceeding of the write procedure is shown as a proceeding bar. Wait here until the bar is at 100%.

As soon as the restore is finished, you get a feedback.

TM-E - Reset

Overview

At the front-side of the TM-E module there is a Reset button. This may be located below the "Line" jack and may be operated by a pointed object.

With the reset (*user reset*) extra created Web pages and Tag configurations are erased. Here the communication settings are still remaining.

For a *complete reset* please contact the VIPA support.



Caution!

An unauthorized *complete reset*, which possibly was not carefully executed, leads automatically to the expiring of the warranty!

Then the device must be sent back to VIPA for reprogramming.

User-Reset

There is the following proceeding for the *user reset*:

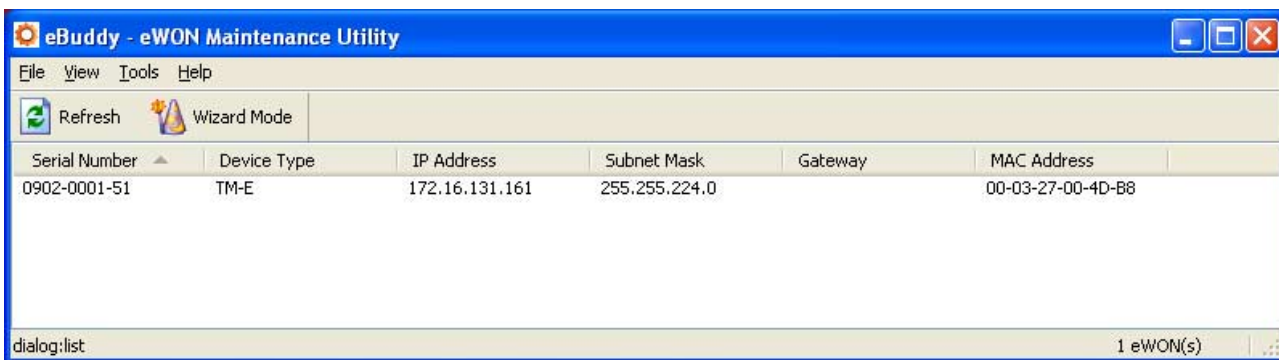
- Switch-off the TM-E module.
- Press the Reset button.
- Switch-on the TM-E module and leave the reset button pressed as long as the "USER"-LED is blinking red.
- Release the Reset button now.

Now the TM-E module executes a restart. Wait until the "USER"-LED blinks green.

TM-E - Web page

Access to the Web page

- Start the VIPA configuration tool "eBuddy".
- Switch to the list view with "Switch to list mode". Here every TM-E module available in your network is listed.



- Click to the concerning TM-E module and select in the context menu "Open in browser". Your Web browser is opened with the request of *User name* and *Password*.
Per default the TM-E module is delivered with the following user data:

User name: adm
Password: adm

After entering *User name* and *Password* the web page of the corresponding TM-E module is opened.



Structure	The functionalities of your TM-E module are separated to the areas <i>Main menu</i> and <i>Configuration</i> with the following structure.
Main menu	Each information of the TM-E module may be accessed by the Main menu. The Information are separated to the following pages:
View I/O	Shows a list of the configured Tags. Here PLC value may be preset and evaluated.
Alarm Summary	At this page the current alarms are listed. Here the alarms may be acknowledged.
Alarm History	Here each alarm and history arte listed.
Diagnostic	This page serves several possibilities for diagnostics of the TM-E module by means of sub pages.
File transfer	Here each information may be downloaded from the TM-E module as lists.
Configuration	Every setting of the TM-E module may be established by this page. Here the main functionalities are separated to the following pages:
Tag Setup	Here Tags may be configured, which were listed at "View I/O" and may be controlled there.
System Setup	Via this page the basic parameters of the TM-E module may be accessed. Depending on the functionality these are assigned to the pages General (general settings, net services and diagnosis), Communication (Interfaces and network) and Storage (administration storage memory).
IO Server Config	There are pre-defined servers for several communication protocols and systems inside the TM-E module. By selecting the corresponding server this may be configured.
Script Setup	To expand the functionalities, scripts may be programmed by means of a BASIC language. Scripts may be transferred and maintained by this page.
User Setup	Here users may be applied and administrated.
Pages List	To increase the structure, Tags may be assigned to several pages. The administration of these pages happens by this page.

TM-E - PLC linking

Preconditions For the further approach there is condition your TM-E module has valid IP address parameters and the Web page of the TM-E module may be accessed.

Connect VIPA PLC via MPI To get access to the VIPA PLC, the VIPA CPU is to be connected to the MPI jack of the TM-E module via a suited MPI cable.
 If there is an Ethernet CP within your PLC, for TM-E access you may connect it to Ethernet instead to MPI.
 Switch-on the power supply of the CPU and switch the CPU to RUN.

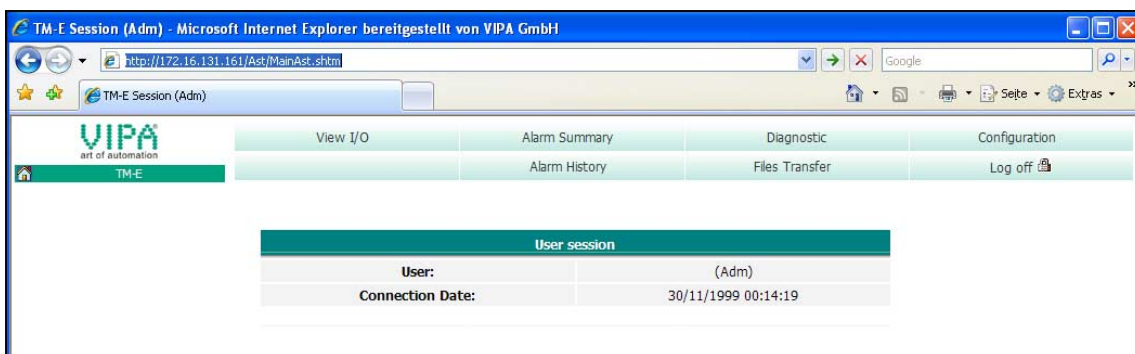
Configure VIPA PLC in TM-E

- Open the concerning Web page of the TM-E module. Now you are requested for access parameters. Per default the TM-E module has the following access parameters:

Access parameters

User name: adm
 Password: adm

- After entering of *User name* and *Password* the Web page of the TM-E module is opened.



- Open with **Configuration** > *IO Server Config* the page to preset I/O server.

I/O server configuration

- For the VIPA PLC select as I/O server "S73&400". The following dialog window is opened:

At "Gateway Configuration" and "MPI/Profibus Setup" the values are preset, which are to be used per default.

- Destination node (Address of the destination node)
- Protocol type (standard: MPI)
- Baud rate (standard: 187500)
- Reply Timeout (standard: 3000ms)
- MPI/Profibus Address (Address of the TM-E module, standard: 0)
- Highest MPI/Profibus Address (standard: 31)

At *Topic ...* access paths to your PLC may be defined, assigned to a corresponding *Topic* character and activated.

By presetting the key words MPI, PROFIBUS respectively ISOTCP and adding an address, a corresponding access path may be defined.

Access via Profibus: PROFIBUS, # (with # corresponds to the Profibus address of your connected PLC)
Example: PROFIBUS, 5

Access via MPI: MPI, # (with # corresponds to the MPI address of your PLC)
Example: MPI, 2

Access via IP address: ISOTCP,IP address,00.02
Enter each without spaces and always add to the IP address ",00.02".
Example: ISOTCP,192.16.167.123,00.02

Enter at *Poll Rate* the standard value 2000ms and click at [Update config].

Test PLC connection

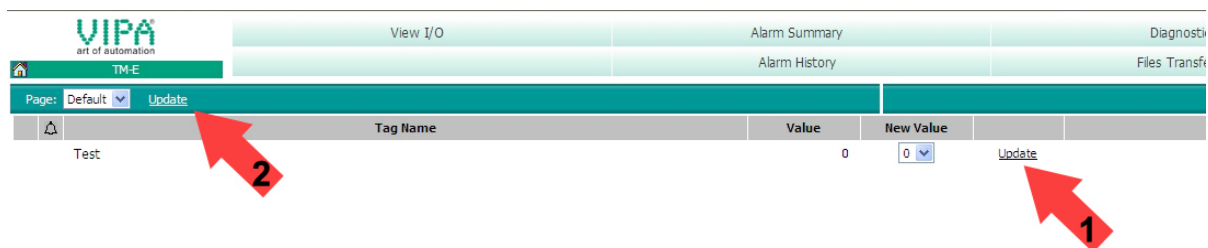
To test the MPI connection a *Tag* is to be created. In a *Tag* memory areas of you PLC are defined.

These storage areas may R/W accessed by the *Tag*.

- To establish a *Tag* open at the Web page the page "Tag setup" and click at "Create new Tag ...".
- Enter the following parameters:
Tag name: Test
Server name: S73&400
Topic name: A
Address: MW0
Type: Boolean
- Otherwise leave the standard setting and click at [Add/Update...].

Access via View I/O

- Switch with **Main menu** > *View I/O* to the Tag list.
- Enter a new value for the *Tag* "Test" and click at [Update]. Now this value is set and may be transferred to the CPU with clicking to [Update] in the headline.



- If the new value is accepted by the CPU, so the communication between the TM-E module and the CPU is secured.

TM-E - Project integration - PG/PC interface

- Precondition** For the further approach it is precondition that you have access to the Web page of the TM-E module and your CPU is connected to the TM-E module via MPI and is accordingly configured.
For the project engineering, a thorough knowledge of the Siemens SIMATIC manager and the hardware configurator from Siemens is required.
IP address and subnet mask of your PC are known.
- Teleservice** With the teleservice the TM-E module works as gateway. As gateway via the served communication connections you have access to the VIPA PLC, which is connected via MPI to the TM-E module.
So that the TM-E module can work as gateway, you have to integrate this to your hardware configuration.
- Load TM-E.cfg station file** For the deployment of the TM-E module in the Siemens SIMATIC manager, the installation of the station file TM-E.cfg is necessary.
This file may be found in the download area at www.vipa.de.
Download this file to your PC. Later this file is to be imported to the PG/PC interface.
- De-activate the automatic IP address assignment** Since in the TM-E module predefined IP address data for the PPP server are used, in your project you have to de-activate the automatic address assignment.
- Start the Siemens SIMATIC manager with your project. Your project should contain your CPU, which is connected via MPI to the MPI bus.
 - Open via **Options** > Set *PG/PC interface* the properties dialog.
 - Select the interface parameter assignment "TCP/IP(Auto)...", which corresponds to your network card and click to [Properties].
 - Select the Register "IE-PG Access" and activate the parameter "Do not assign IP address automatically".
 - Confirm your setting with [OK].

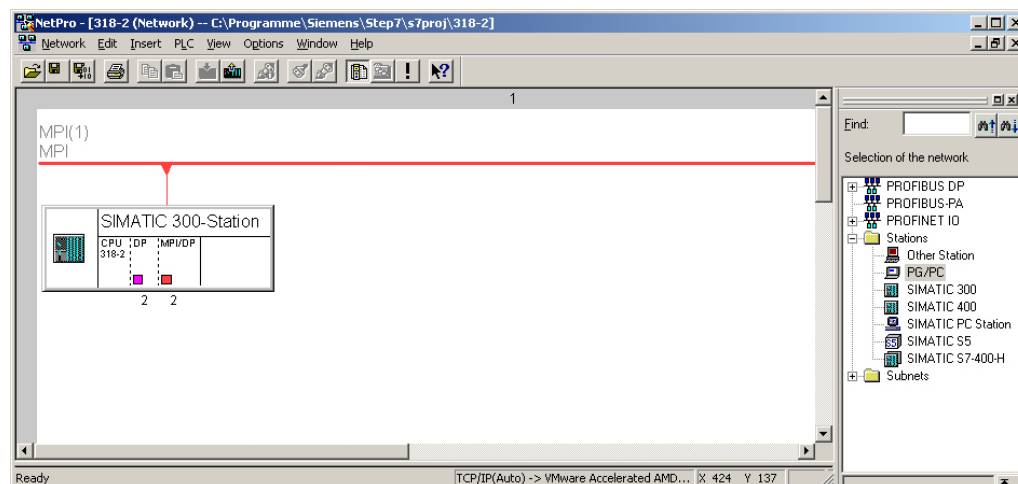
Integrate the TM-E module to the Siemens SIMATIC manager

The integration of the TM-E module to your project happens as PG/PC interface. After the configuration this may be defined as access path for the PLC functions.

The configuration happens with the following approach:

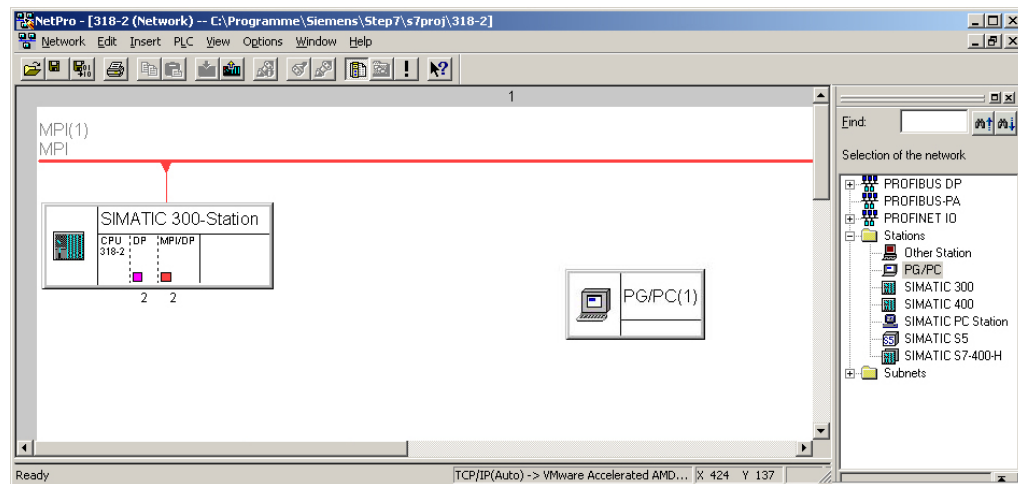
- Start the software NetPro, by clicking to .

For example you see the following structure:



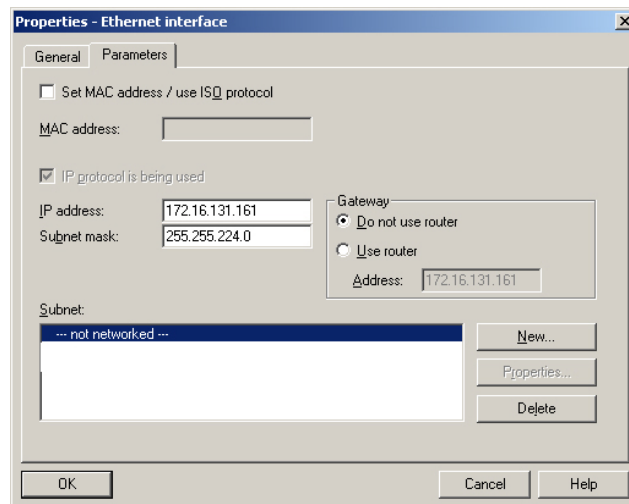
Add PG/PC station

- Add the station "PG/PC" from *Network*, by double-clicking to the station "PG/PC".

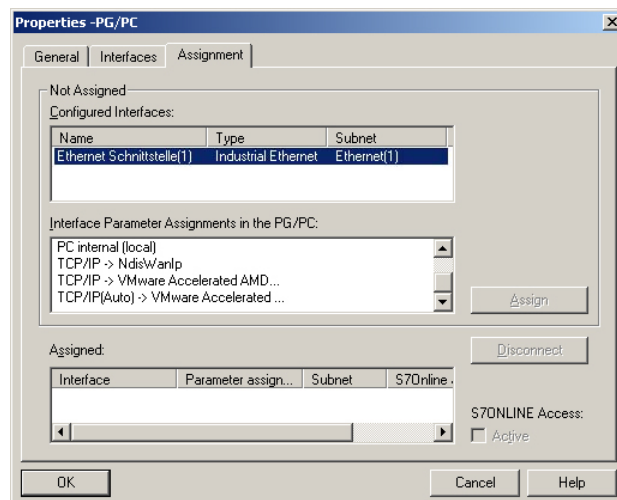


Properties PG/PC station

- Open the properties of the PG/PC station.
- Access the register "Interfaces" and click to [New...].
- Select the type "Industrial Ethernet" and click to [OK].
- De-activate "Set MAC address..."
- Enter at "IP address" and "Subnet mask" the IP address parameters of you PC determined before.

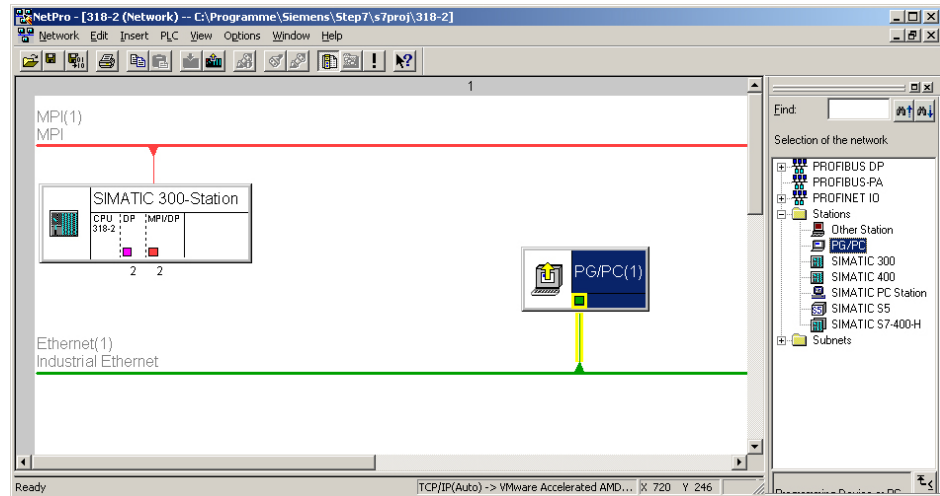


- To establish a new subnet click at [New...].
- Confirm the properties with [OK].
- Select if not happened the new established subnet and click at [OK]. Now you are back in the properties dialog.
- Call the register "Assignment" auf.
- Highlight at "Configured Interfaces" your Ethernet interface and select at "Interface parameter assignments in the PG/PC" the parameter, which starts with "TCP/IP(Auto) ->..." and corresponds to your network card.
- Click at [Assign].



- Ignore the warn messages and close the "properties" dialog with [OK].

Now your graphical net view should show the following structure:

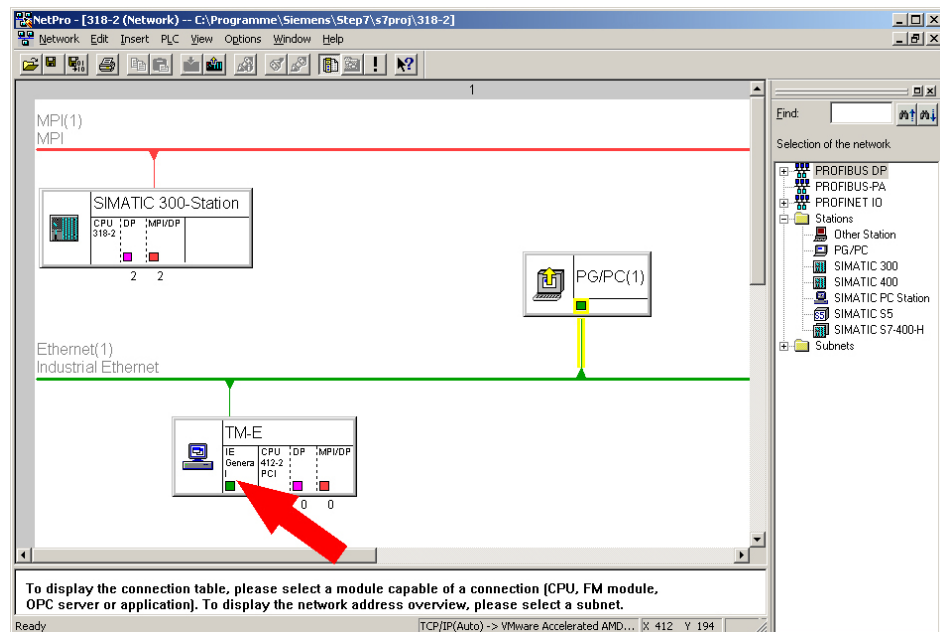


Import the TM-E module via station file

To import the TM-E module to your project the first downloaded station file is necessary.

- Start in NetPro the import via **Edit > Import**.
- Activate the parameter "Export file of a station".
- Enter path and name of the station file TM-E.cfg and click to [OK]. Possibly appearing warnings may be ignored by [Close].

Now your graphical net view should show the following structure:



- Open the properties dialog of the communication component "IE General" of the station "TM-E".
- Click in the area "Interface" at [Properties...]. A dialog window for IP address data settings is opened.

Define access via IP address

Depending on the access modes to your TM-E, there are the following possibilities to preset IP address parameters:

Access via Ethernet

Enter here IP address and subnet mask of your TM-E module. The IP address parameters must correspond to the IP address parameters, which were preset with the software tool "eBuddy".

Access via PPP connection

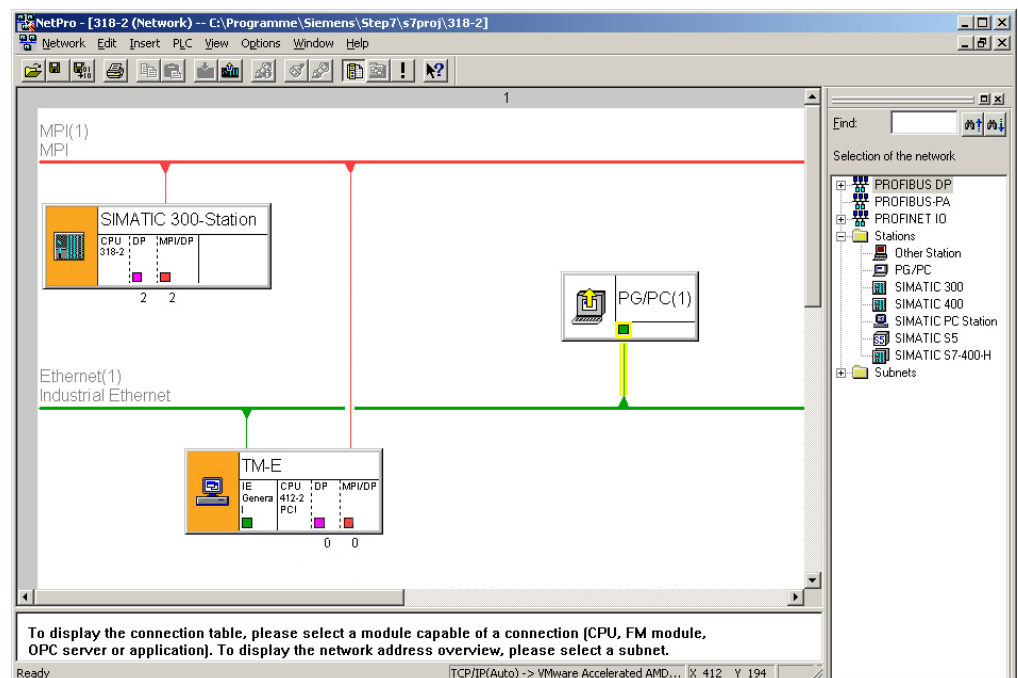
If you want to access your TM-E module via dial connection (PPP connection), the following preset IP address parameters are to be used:

IP address: 202.0.0.240
 Subnet mask: 255.255.255.0

Set the MPI address

Open the properties dialog of the communication component "MPI/DP" of "TM-E". Enter the MPI address. This must correspond to the MPI address preset by the software tool "eBuddy".

NetPro should now show the following structure.



Transfer the project to the CPU

Click in the graphical net view at the CPU and transfer your project with **Download > Selected stations**.

Now your CPU may be accessed via this connection from the Siemens SIMATIC manager.

Deployment of Tags

Precondition For the further approach it is precondition that you have access to the Web page of the TM-E module, your PLC may be reached via the TM-E module and the corresponding *Topics* are configured. The access paths to your PLC are defined by *Topics*. More about the configuration of *Topics* may be found at "TM-E - PLC linking".

What is a Tag? A *Tag* is a digital respectively analog value, which is assigned to a data source. For example the data source could be a flag word of your PLC. To a Tag you have reading and writing access (configurable). So the directly assigned data source may be accessed by the Tag.
By presetting of limit values for a Tag, the TM-E module has the possibility for limit monitoring and appropriate alerting via SMS respectively eMail.

Establishing a Tag

- Open the Web page of the TM-E module to establish a Tag.
- Navigate via **Configuration** > *Tag setup* to the page "Create New Tag....".
- Here the following parameters may be entered:

Identification

Tag name: Name with which the Tag is listed. The Tag name may maximally consist of 64 characters and must not include the following characters:
space \$ "

Page: Let the value at "Standard"

Tag description: Give a comment to the Tag

I/O server setup

Server name: For VIPA PLCs select "S73&400"

Topic name: Devices within an I/O server are grouped by *Topic name*.
Enter A, if you have defined your MPI interface as Topic A, as described at "TM-E - PLC linking".

Address: Enter a value from your PLC, which is to be assigned to the Topic (see the following table).

Type: Here define as Type *boolean* or *analog* depending on the parameter *Address*.

Alarm setup

If you wish an alerting, you may enter limit values here for alert messages.

Name conventions for Address The following symbolic names may be used on deployment together with a VIPA PLC by selecting "S73&400" server:

Symbol

Symbol	Memory type	Modifier	Address
DBx	Data block with No. x	B, C, W, S, D, L, F	Byte offset
M	Internal memory (flag)	B, C, W, S, D, L, F	Byte offset
C	Counter	W, S	Counter No.
T	Timer	W, S	Timer No.
I	Process inputs	B, C, W, S, D, L, F	Byte offset
Q	Process outputs	B, C, W, S, D, L, F	Byte offset
PI	Peripheral inputs	B, C, W, S, D, L, F	Byte offset
PQ	Peripheral outputs	B, C, W, S, D, L, F	Byte offset

Modifier

Modifier	Type	Range of values
B	Byte	0 ... 255
C	Byte with sign	-128 ... 127
W	Word	0 ... 65535 (default)
S	Word with sign	-32768 ... 32767
D	DWord	0 ... 4294967296
L	DWord with sign	-2147483648 ... 2147483647
F	Float	+/- 3.4E38

Bit access via #

With each memory type there is the possibility to access a bit. Here add a # and the bit no. to the *Address* name.

For the bit no. the values 0 ... 7 may be used.



Note!

If you do not enter a *Modifier* automatically the type "Word" is used. With data blocks a *Modifier* is always to be entered.

Example

Address	Description
MW4	Flag word 4
CS1	Counter 1, read as word with sign
TS7	Timer 7, read as word with sign
DB2L5	DWord at address 5 (in bytes) in data block 2
IB3	Byte at address 3 (in bytes) in the input area
I5#2	Input I5.2
Q10#6	Output Q10.6

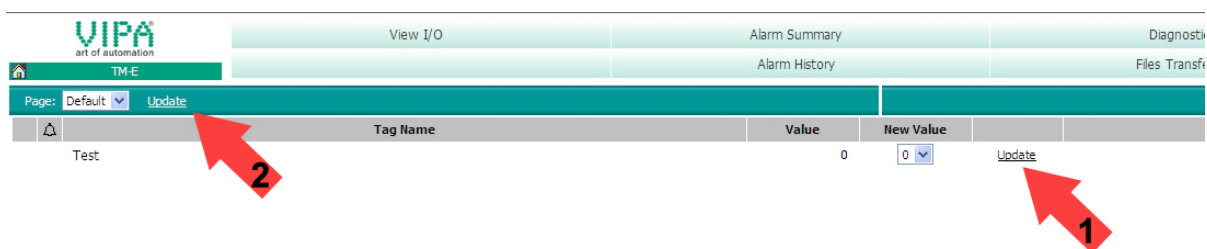
Example

For the further approach it is precondition that you have access to the Web page of the TM-E module, your PLC may be reached via the TM-E module and the corresponding *Topics* are configured.

- Open the Web page of the TM-E module
- Navigate via **Configuration** > *Tag setup* to the page "Create new Tag ...".
- Enter the following parameters:
 - Tag name:* Test
 - Server name:* S73&400
 - Topic name:* A
 - Address:* MW0
 - Type:* Boolean
- Otherwise leave the standard setting and click at [Add/Update...].

Access via View I/O

- Switch with **Main menu** > *View I/O* to the Tag list.
- Enter a new value for the Tag "Test" and click at [Update]. Now this value is set and may be transferred to the CPU with clicking to [Update] in the headline.



- If the new value is accepted by the CPU, so the communication between the TM-E module and the CPU is secured.

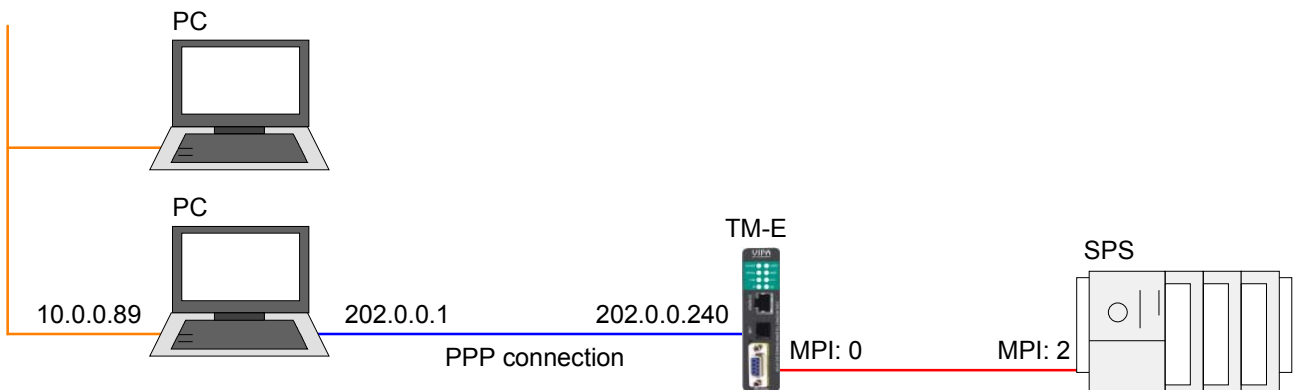
Teleservice via telephone with MPI gateway

Overview

With the teleservice via telephone with MPI gateway, a connection via telephone (PPP connection) is directly established from your PC to the TM-E module. Here the CPU is linked to the TM-E module by MPI.

To be able to react to the calling, to authenticate the user and to assign the IP address, the TM-E module is to be configured as PPP server.

The following picture shows the network topology on an example:



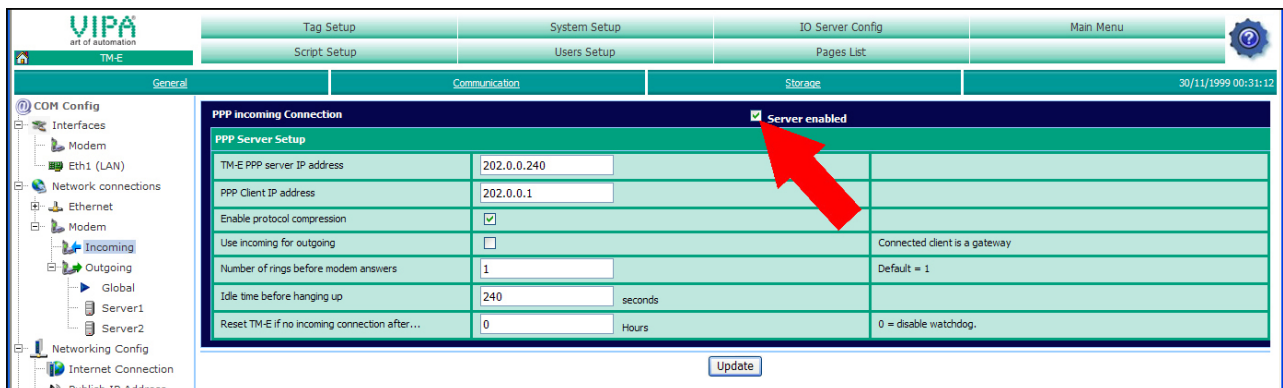
In the configuration above there are 2 various networks:

- 10.0.0.0 is the network of your PC.
- 202.0.0.0 is the temporary network, which is to be used for the PPP connection. This network is only active during PPP connection.

Configuration of the direct telephone connection

To access the TM-E module via PPP connection the server for incoming PPP connections is to be configured.

- Here open the Web page of the TM-E module.
- Navigate to the "Communication" page via **Configuration** > *System setup*. Open the page "Incoming" in the navigation tree **Network Connection** > *Modem*.
- Activate the option "Server enabled".



- Here enter the following parameters:
 - "TM-E PPP server IP address": 202.0.0.240
 - "PPP client IP address": 202.0.0.1
- Accept the remaining default settings and click at [Update].

Configure your PC modem so that it may establish a connection to the TM-E module. Here establish a DFÜ connection. More about this may be found in the manual of your PC operating system.

Here please regard that User name and Password are identical to the access data in you TM-E module.

Test the telephone connection

Call your TM-E module via the PC modem.

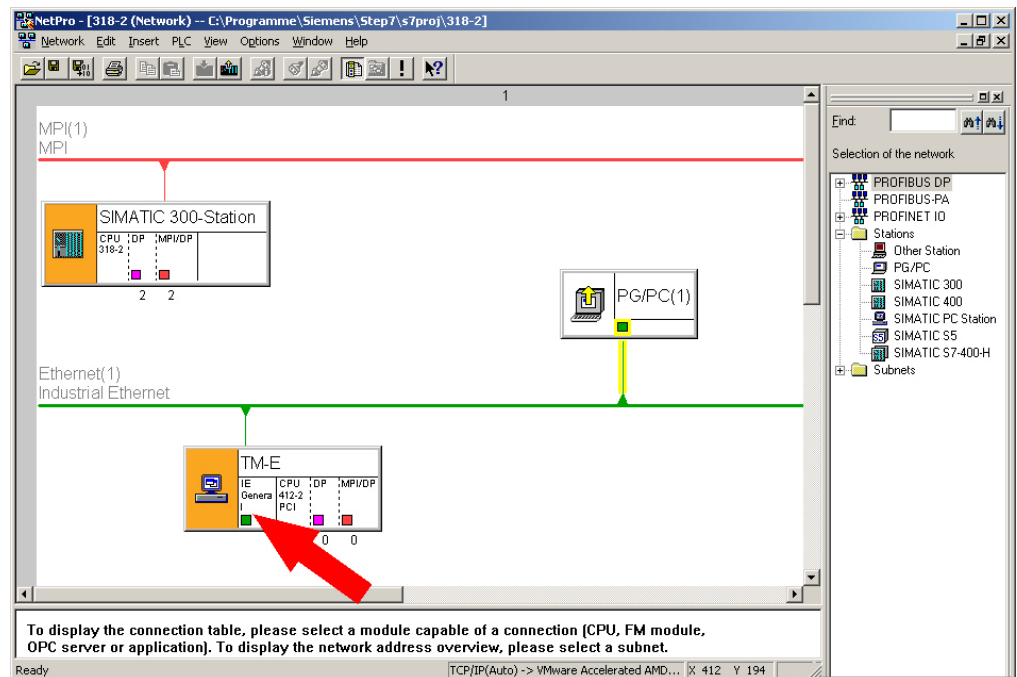
Open as soon as the TM-E module reacts a DOS command window and send a ping to the IP address 202.0.0.240. You should now get a response. Else check your settings.

Configure routing in PLC project

Information how to integrate your TM-E modules to your PLC may be found at "TM-E - Project integration - PG/PC interface".

If you have just integrated your TM-E module into your PLC project, at the TM-E station of NetPro the routing is accordingly be adapted.

- Open NetPro with your project.



- Open the properties dialog of the communication component "IE General" of the station "TM-E".
- Click at "Interface" at [Properties]. A dialog window for presetting the IP address data is opened.

Access defined by IP address

For the access via PPP dial connection the following predefined IP address data are to be used:

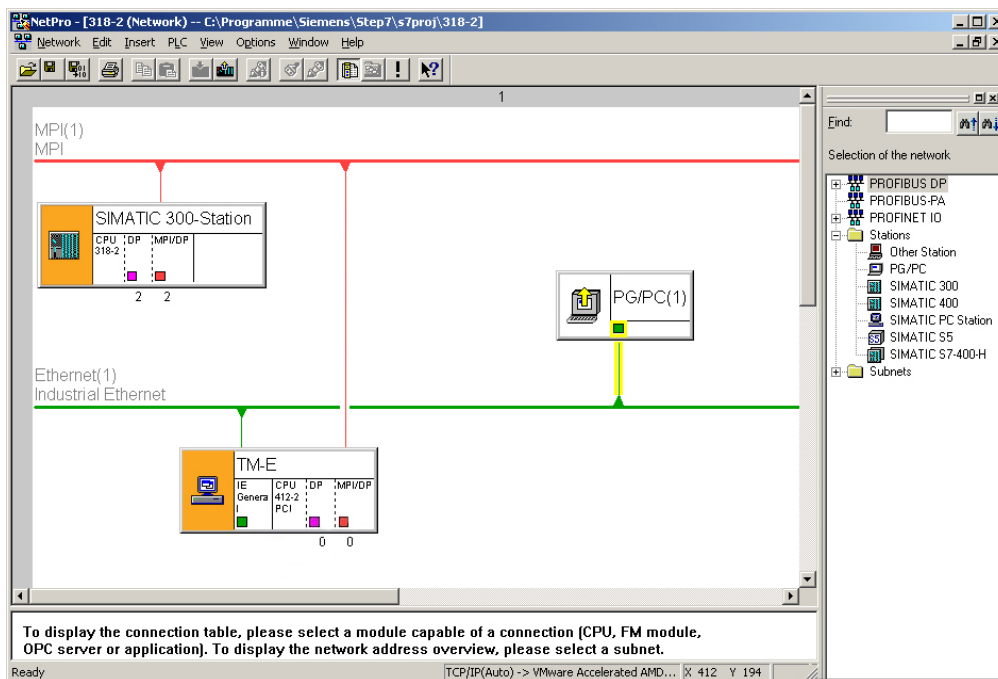
IP address: 202.0.0.240
 Subnet mask: 255.255.255.0

Set MPI address

Open the properties dialog of the communication component "MPI/DP" of "TM-E". Enter the MPI address. This must be the same as the MPI address configured with the software tool "eBuddy".

Please regard that your CPU is connected via MPI and the MPI address is accordingly assigned. VIPA CPUs are delivered with MPI address 2.

NetPro should now show the following structure.



Transfer the project to the CPU

Click in the graphical net view at the CPU and transfer your project with **Download > Selected stations.**

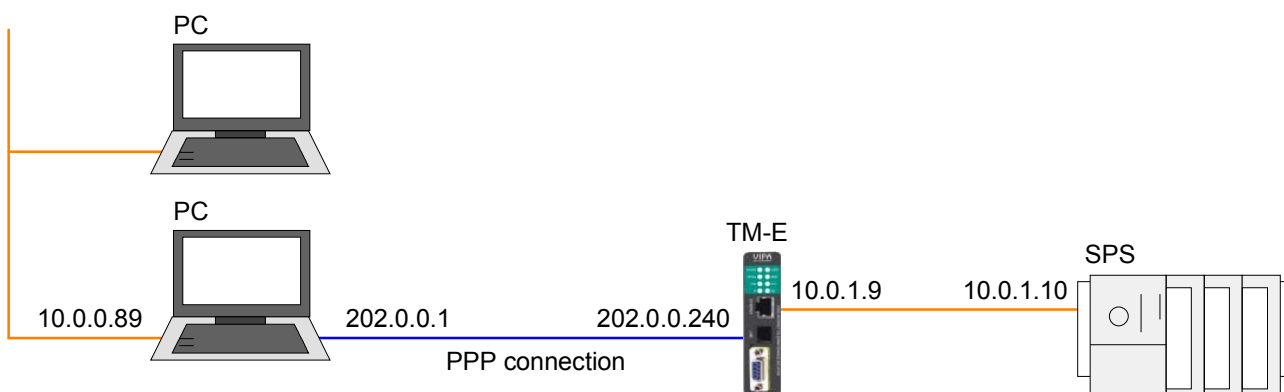
Teleservice via telephone - Ethernet gateway

Overview

With teleservice via telephone with Ethernet gateway, a connection via telephone (PPP connection) is directly established from your PC to the TM-E module. Here the CPU is linked to the TM-E module by Ethernet.

To be able to react to the calling, to authenticate the user and to assign the IP address, the TM-E module is to be configured as PPP server.

The following picture shows the network topology on an example:



In the configuration above there are 3 various networks:

- 10.0.0.0 is the network of your PC.
- 202.0.0.0 is the temporary network, which is to be used for the PPP connection. This network is only active during PPP connection.
- 10.0.1.0 is the network, over which the PLC is to be accessed.

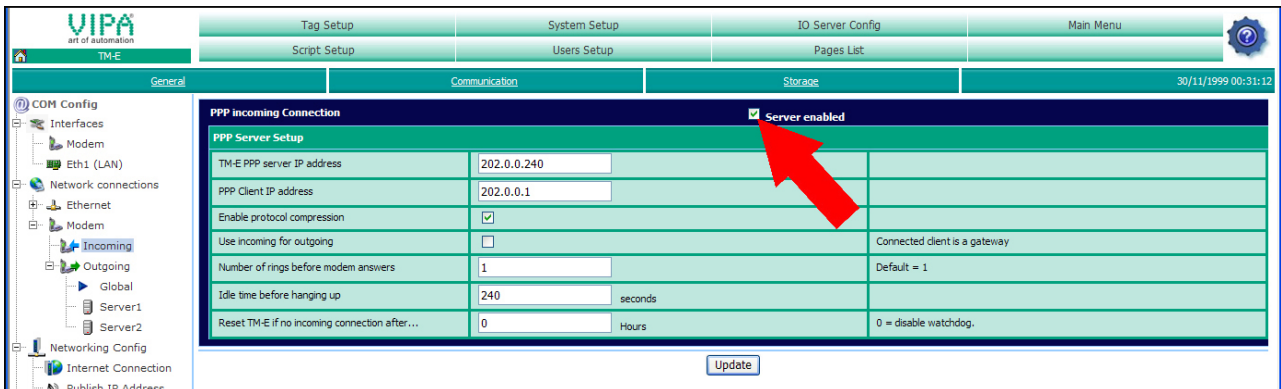
Here the following routing configuration is to be established:

- Configure the PC so that every IP package, based on the PPP connection, is transferred to the 10.0.1.0 network of the PLC.
- Configure the TM-E module so that every IP package, which was received from address 202.0.0.240, is transferred to the address 10.0.1.0.
- Configure the PLC so that it may answer every net except the net with 10.0.1.0.

Configuration of the direct telephone connection

To access the TM-E module via PPP connection the server for incoming PPP connections is to be configured.

- Here open the Web page of the TM-E module.
- Navigate to the "Communication" page via **Configuration > System setup**. Open the page "Incoming" in the navigation tree **Network Connection > Modem**.
- Activate the option "Server enabled".



- Here enter the following parameters:
 - "TM-E PPP server IP address": 202.0.0.240
 - "PPP client IP address": 202.0.0.1
- Accept the remaining default settings and click at [Update].

Configure your PC modem so that it may establish a connection to the TM-E module. Here establish a DFÜ connection. More about this may be found in the manual of your PC operating system.

Here please regard that User name and Password are identical to the access data in you TM-E module.

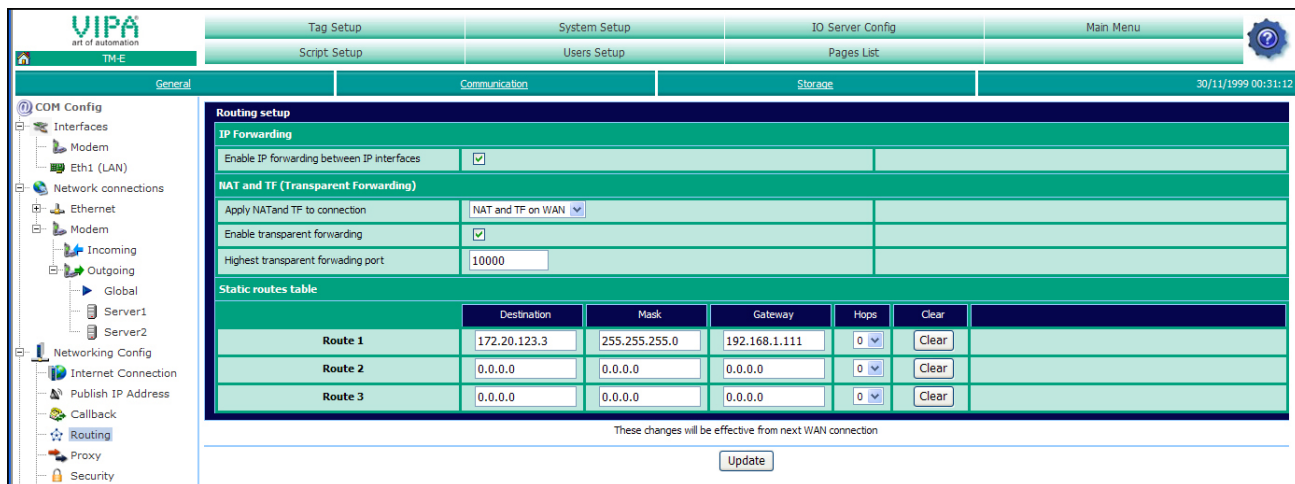
Test the telephone connection

Call your TM-E module via the PC modem.

Open as soon as the TM-E module reacts a DOS command window and send a ping to the IP address 202.0.0.240. You should now get a response. Else check your settings.

Configure forwarding

So that your TM-E module may transfer every IP packages received from the PPP connection to the PLC, you have to configure *Forwarding*.



- Navigate to the page "Communication" via **Configuration > System Setup**. Open in the Navigation tree **Network Configuration** the page "Routing".
- Activate the option "Enable IP forwarding between IP interfaces" and click at [Update].

Configure TM-E as gateway

Since your PC is connected to the TM-E module via telephone, your TM-E module is automatically set as gateway in your PC. Here in you PC no further settings are necessary.

To get access to your via Ethernet connected PLC, in your PLC respectively network device you have to set the IP address of your TM-E module as gateway.

For this open in NetPro the properties dialog of your Ethernet part and enter as gateway the IP address of your TM-E module.

Callback-Function

If you have just established the teleservice via telephone, the callback function in your TM-E module may now be used.

By means of a call (defined numbers of ring signals) your TM-E module may be activated to send an eMail. In the eMail among others an IP address may be found as link.

As long as your TM-E module is online, it may be accessed via this link.

More about this may be found at "Teleservice via Callback function".

Teleservice via Callback function

Overview

With Callback there is the possibility to call the TM-E module with a defined number of ring signals to initiate the callback mode.

Now the module accesses the Internet and sends an eMail, which contains in its text a dynamic PPP IP address. This address may be accessed as long as the TM-E module is online.

So you may save money for connection, if e.g. the plant to be observed is abroad.

The configuration of the Callback mode happens on the Web page of the TM-E module with the following approach:

- Configuration of the direct telephone connection
- Configuration of the dial-up server
- Configuration of the mail server
- Activation of the Callback

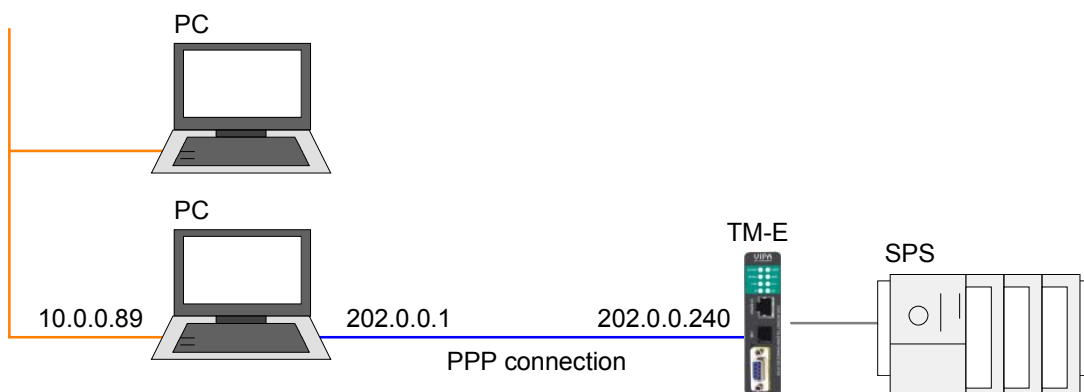
Configuration of the direct telephone connection

If you have just established the teleservice via telephone, please continue with the configuration of the dial-up server.

With the teleservice via telephone a connection via telephone (PPP connection) is directly established from your PC to the TM-E module.

To be able to react to the calling, to authenticate the user and to assign the IP address, the TM-E module is to be configured as PPP server.

The following picture shows the network topology on an example:



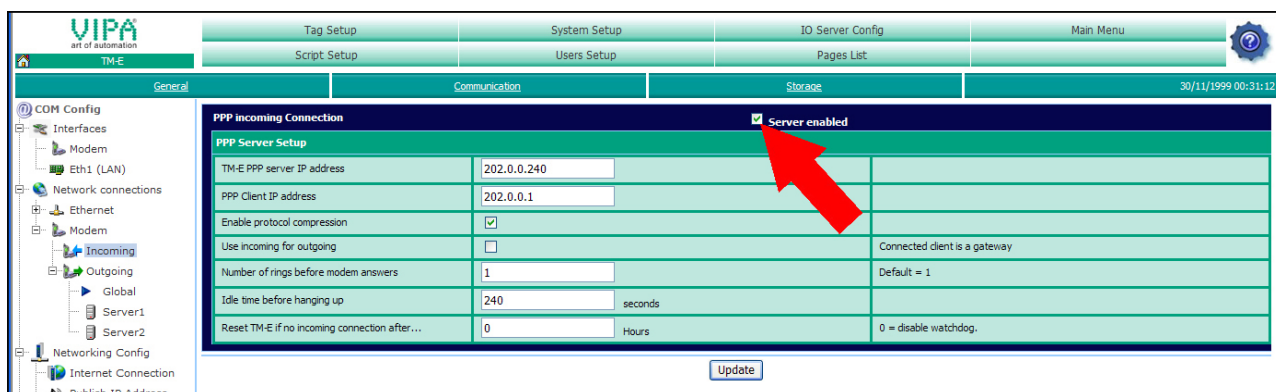
In the configuration above there are 2 various networks:

- 10.0.0.0 is the network of your PC.
- 202.0.0.0 is the temporary network, which is to be used for the PPP connection. This network is only active during PPP connection.

Configuration

To access the TM-E module via PPP connection the server for incoming PPP connections is to be configured.

- Here open the Web page of the TM-E module.
- Navigate to the "Communication" page via **Configuration** > *System setup*. Open the page "Incoming" in the navigation tree **Network Connection** > *Modem*.
- Activate the option "Server enabled".



- Here enter the following parameters:
 - "TM-E PPP server IP address": 202.0.0.240
 - "PPP client IP address": 202.0.0.1
- Accept the remaining default settings and click at [Update].

Configure your PC modem so that it may establish a connection to the TM-E module. Here establish a DFÜ connection. More about this may be found in the manual of your PC operating system.

Here please regard that User name and Password are identical to the access data in you TM-E module.

The default access parameters are:

User name: adm
Password: adm

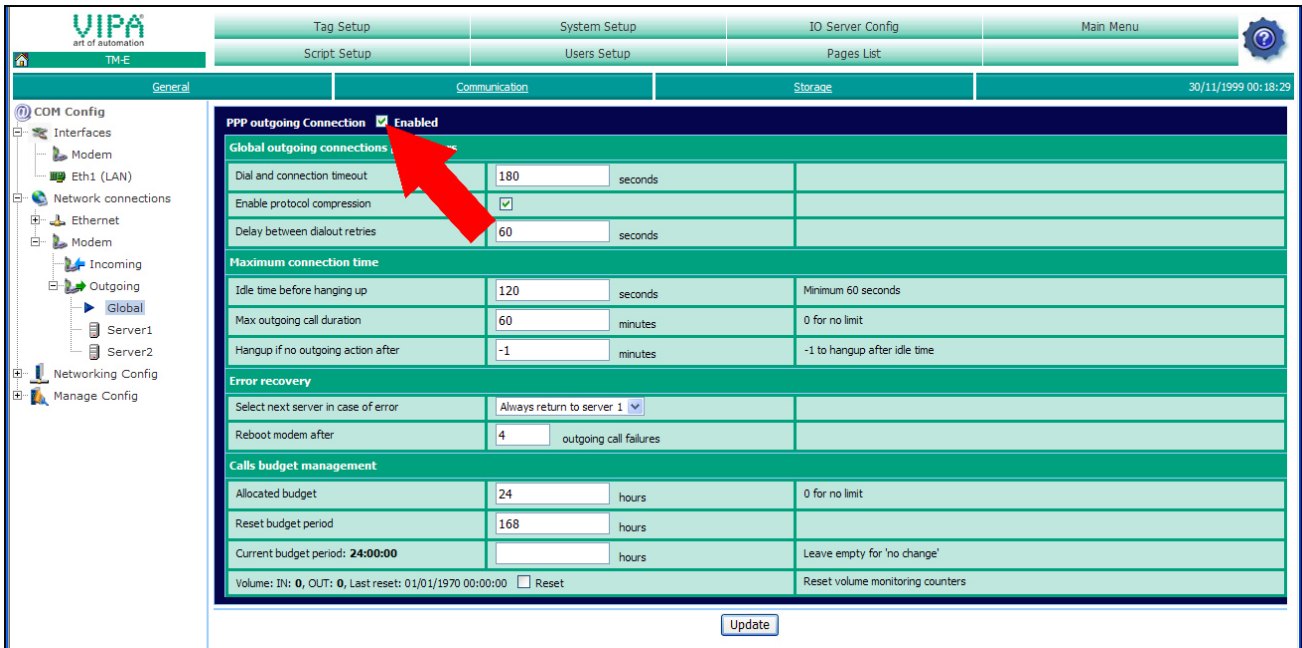
Test the telephone connection

Call your TM-E module via the PC modem. Open as soon as the TM-E module reacts a DOS command window and send a ping to the IP address 202.0.0.240. You should now get a response. Else check your settings.

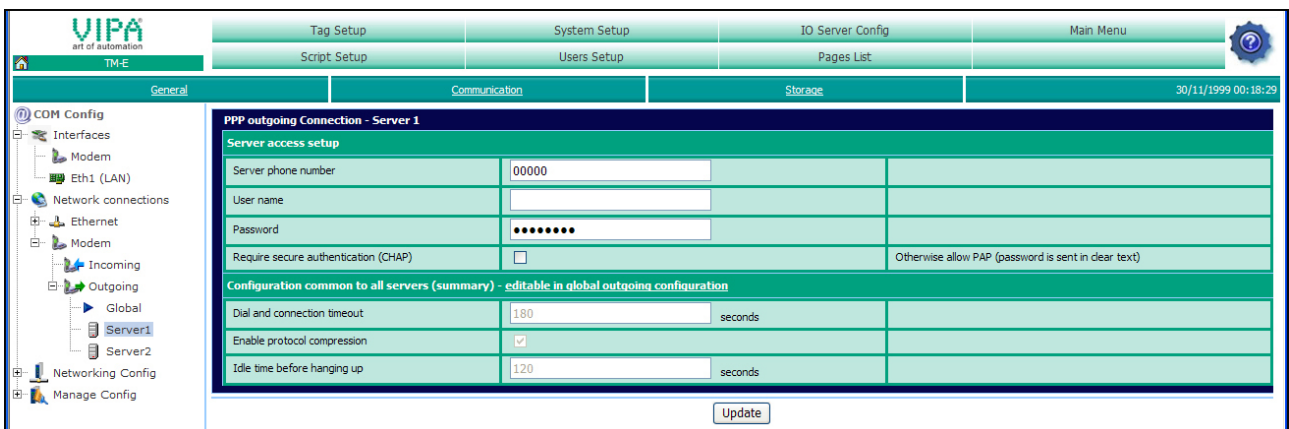
Configuration of the dial-up server

Activate the dial-up server for the dial-up to the Internet.

- Here open the Web page of the TM-E module.
- Navigate via **Configuration** > *System setup* to the page "Communication". Open at the navigation tree **Network connection** > *Modem* > *Outgoing* the page "Global".
- Activate the option "PPP outgoing connection parameters".



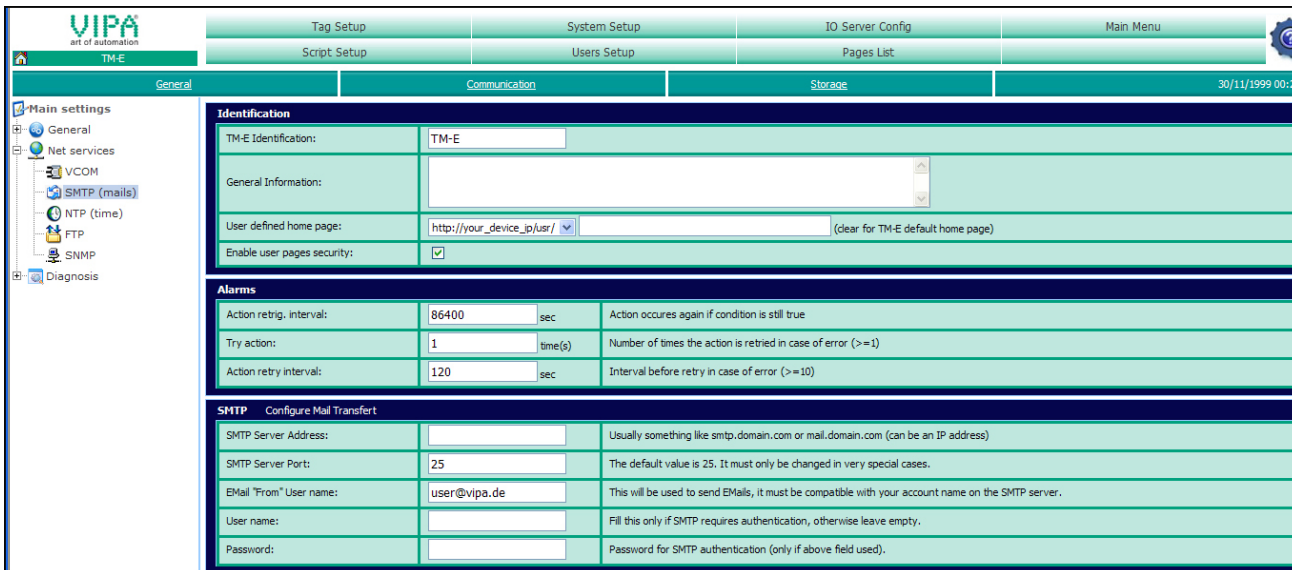
- Leave every value at default setting and click at [Update].
- Click at "Server1".



- For the dial-up via modem enter *Server phone number*, *User name* and *Password* and click at [Update].

Configuration of the mail server

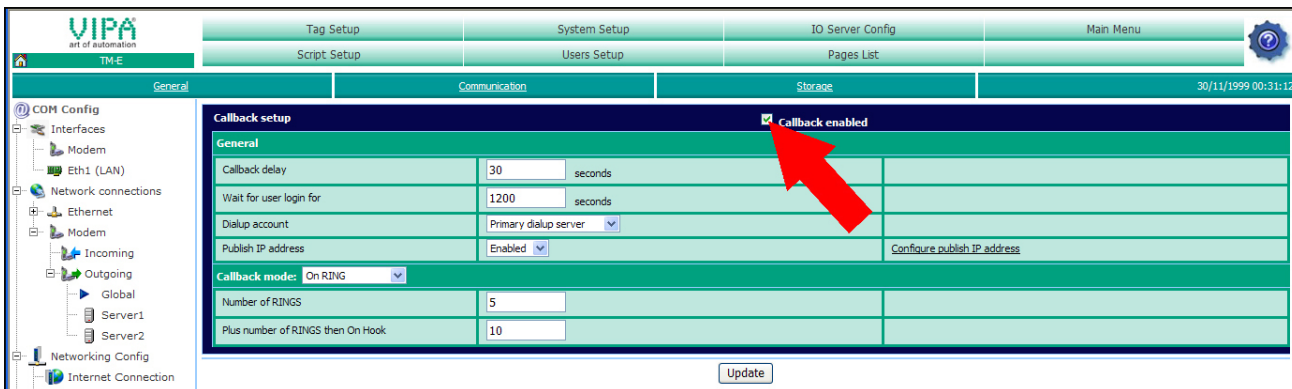
- To enter the SMTP server open the page "General" at "System setup".
- Navigate at the navigation tree to **Net Services > SMTP (mails)**.



- Here enter the following parameters:
 - SMTP server address (may be an IP address or a domain)
 - SMTP server port (default: 25)
 - eMail address (valid eMail address)
 - *User name* and *Password* may only be entered if secure authentication was activated in the dial-up server configuration.

Activation of the Callback

- To activate the Callback open the page "Communication" at "System setup".
- Navigate in the navigation tree to **Network Config > Callback**.



- Activate the option "Callback enabled".
- Accept the default settings and click at [Update].

Test the Callback

For a test call the telephone number of your TM-E module. Let it ring 5 times and then disconnect. After about 30 seconds the TM-E module attempts now to dial-up to the Internet to establish a connection to the mail server to send you an eMail. The eMail contains an IP address. The TM-E module may now be accessed by this address.

Sending SMS via mail gateway

Precondition

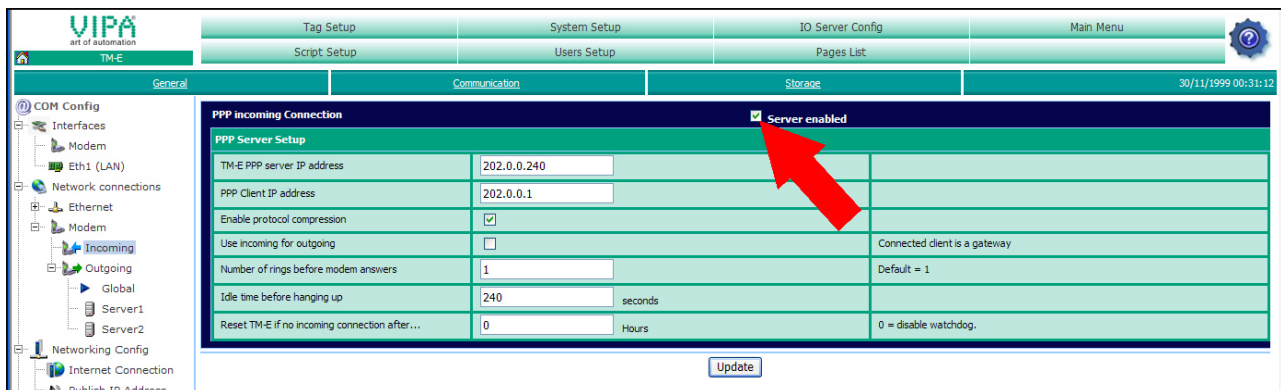
There is the possibility to send SMS via mail gateway with the TM-E module. For the further approach it is precondition that you have access to the Web page of the TM-E module and your CPU is connected to the TM-E module via MPI and is accordingly configured.

Further it is precondition that a corresponding eMail account (freemail provider) with SMS notification is established and the access data are available.

Modem configuration

So that your TM-E module may communicate via modem, the parameters for *PPP incoming* and *PPP outgoing connection* are accordingly to be configured.

- Here open the Web page of the TM-E module.
- Navigate to the page "Communication" via **Configuration** > *System Setup*. Open at the navigation tree **Network connection** > *Modem* the page "Incoming".
- Activate the option "Server enabled".

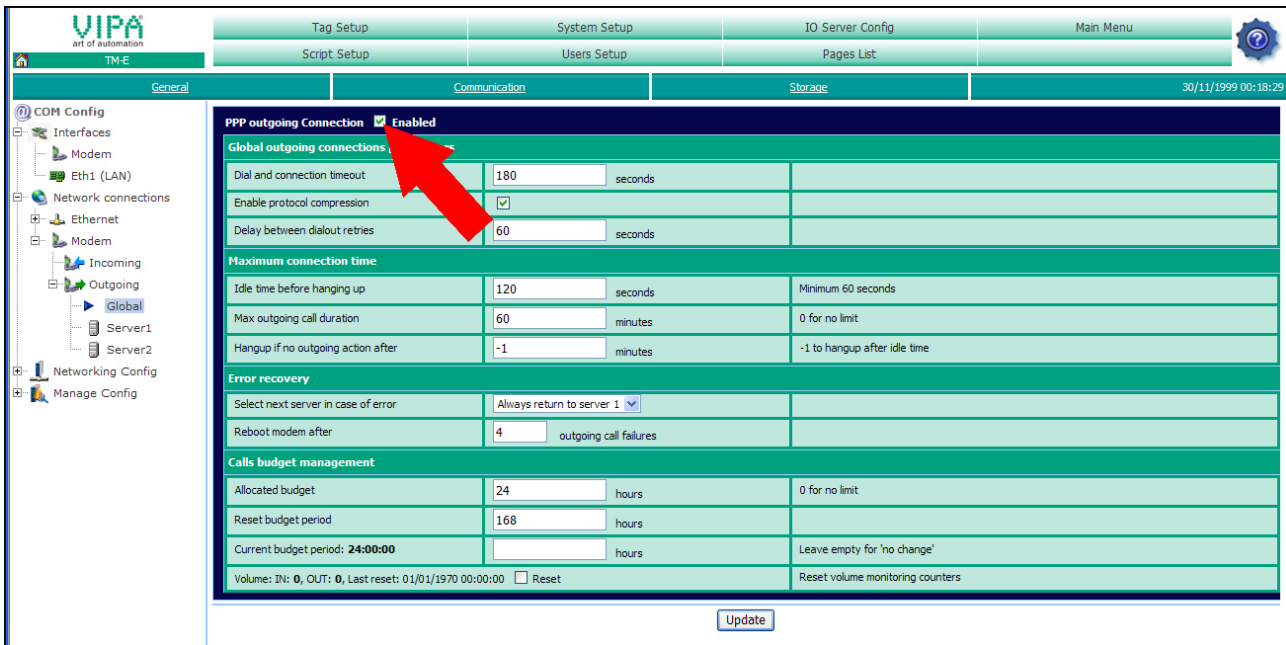


- Here enter the following parameters:
 - "TM-E PPP server IP address": 202.0.0.240
 - "PPP client IP address": 202.0.0.1
- Accept the remaining default settings and click at [Update].

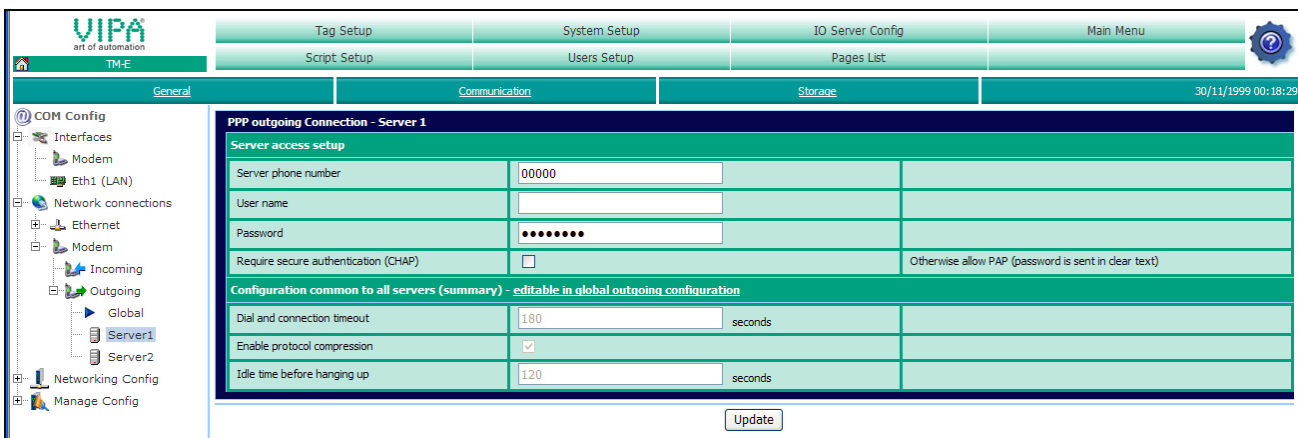
Configuration of the dial-up server

For the dial-up to the Internet the dial-up server is to be activated.

- Here open the Web page of the TM-E module.
- Navigate to the "Communication" page via **Configuration > System Setup**. Open at the navigation tree **Network connection > Modem > Outgoing** the page "Global".
- Activate the option "PPP outgoing Connection".



- Leave the values with its standard setting and click at [Update].
- Click at "Server1"



- Type in *Phone number*, *User name* and *Password* for the Modem-dial-up and click at [Update].

Configuration of the Internet connection

- Open at the navigation tree **Network config** the page "Internet Connection".
- Select at "Internet access" the parameter "Modem Connection" and click at [Update].

Configuration of the eMail functionality

- For the eMail configuration navigate via **Configuration** > *System setup* to the page "General". Open the page "SMTP (Mails)" in the navigation tree **Net services**.
- Enter the following parameters:

<i>SMTP server address:</i>	Server address of your eMail provider (outbox).
<i>SMTP server port:</i>	Default 25, this is to be changed very rarely.
<i>eMail "from":</i>	Your eMail address.
<i>User name:</i>	Your eMail user name.
	In most cases it is the same as the eMail address.
<i>Password:</i>	Your eMail password.

- Click at [Update].

Establishing a test Tag

- To establish a test Tag open the page "Create new tag..." via **Configuration** > *Tag setup*.
- Enter here the following parameters:

Identification

<i>Tag name:</i>	Alarm1
<i>Page:</i>	Default
<i>Tag description:</i>	Comment

I/O server setup

<i>Server name:</i>	MEM
<i>Topic name:</i>	not necessary
<i>Address:</i>	not necessary
<i>Type:</i>	boolean

Alarm setup

<i>Alarm enabled:</i>	enable option
<i>Boolean alarm level:</i>	set to 1

- Leave the other values on its default setting, enable the option "Then edit notification" and click at [Add/Update only].

The dialog window "Alarm notification ..." is opened


- Enter the following parameters:

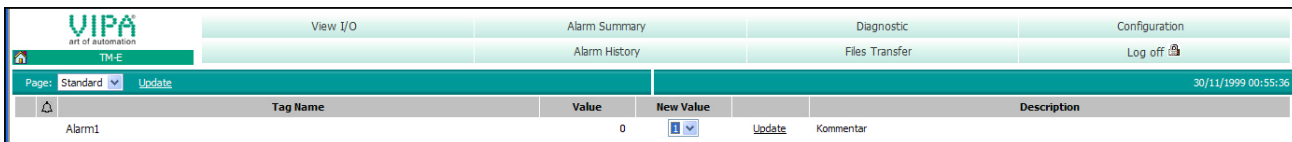
eMail upon: enable the option ALM
Short message: enable the option "Format as short message". This limits the mail text to 160 characters (SMS default).
eMail to: eMail address (free mail provider)
eMail CC: here a further eMail address may be entered.
eMail subject: enter here a suited subject.
eMail attachments: this parameter is not necessary.

- Click at [Update].


Testing the alarm function

To release a test mail you have to release an alarm.

- For this open the Main menu of the TM-E Web page and click at "View I/O". Here you will find the new created Tag "Alarm1".
- To release an alarm set the "New value" to 1
- Click at "Update". The new value is set. This releases an alarm due to the alarm settings and is indicated by the alarm symbol .



In the mean time the TM-E has sent an eMail to the preset eMail address. This should be now forwarded via SMS by your free mail provider.

- For acknowledgement of the alarm it is necessary to reset the value to "0".
- Click to the alarm symbol . The event list is opened.
- Highlight the alarm and click at [Acknowledge selected]. The alarm is deleted from the event list.

Appendix

A Index

A	
Alarm function.....	3-40
Assembly	1-4, 3-5
B	
Backup function	3-12
Bit access	3-25
C	
Cabling.....	1-6, 3-6
Callback	3-33
D	
Deployment.....	3-1
Dial-up server	3-35
Digital I/O	2-6
DIP switch.....	2-5
E	
eBuddy.....	3-7
EMC.....	1-7
Basic rules	1-8
Ethernet	3-30
F	
Fast introduction	3-2
Firmware update.....	3-11
Forwarding.....	3-32
H	
Hardware description.....	2-1
Host-ID.....	3-8
reserved.....	3-9
I	
Installation dimensions	1-3
Installation guidelines.....	1-7
Interface	
MPI	2-5
RJ11 ISDN modem.....	2-4
RJ45 Ethernet.....	2-4
Interference influences	1-7
IP address.....	3-8
at PPP connection	3-23
Basics	3-8
change.....	3-10
Classes.....	3-9
on delivery	3-2
Isolation of conductors.....	1-9
L	
LEDs	2-3
Line termination	2-5
M	
Mail gateway.....	3-37
Mail server	3-36
MPI	3-27
N	
Net-ID	3-8
NetPro	3-20
P	
PG/PC interface.....	3-19
PLC.....	3-16
Linking.....	3-16
Project integration	3-19
Routing	3-28
Teleservice	3-24
Polarization.....	2-5
Power supply	2-6
Profile rails.....	1-4, 3-5
Properties	2-2
R	
Removal	1-5
Reset	2-6, 3-13
S	
Safety information.....	1-2
SMS functions	3-37
Station file.....	3-19
Structure	2-3
Subnet mask	3-8
T	
Tag	3-24
Name conventions.....	3-25
Technical Data.....	2-7
Telephone connect. ...	3-27, 3-31, 3-34
Teleservice	
Callback function	3-33
Telephone	
Ethernet gateway	3-30
MPI gateway	3-27
Topic.....	3-17
W	
Web page	3-14
Access data.....	3-14
Structure.....	3-15

